

**J K Cement Limited**

**CORPORATE ENVIRONMENT POLICY**

JK Cement Limited is committed to ensure clean, green and healthy environment for sustainable development through:

- By ensuring that the activities of the company comply with all the relevant laws, regulations and industry and applicable codes of standards and practices, as well as to take any additional measures considered necessary.
- By involving all employees in implementation of the Company's policy and imparting appropriate training, providing for dissemination of information to employees on Environmental objectives and performance through suitable communication networks.
- By involving the Suppliers, Vendors, Customers, Clients and other Business Associates to promote awareness among them for their responsibility towards Environment and to encourage their participation in achieving our Environmental Goals.
- Continuously improve in effectiveness of environmental management with proper systems to prevent, mitigate and control environmental impacts due to operations across the value chain and local community.
- By building awareness to all stakeholders including employees, customers, vendors etc. on environmental issues as well as compliance of relevant environmental legislation by implementing the environmental management system.
- By improvement in environment management, efficient use of natural resources, energy & plant equipment.
- By promoting reuse and recycling wastes, reduction in emission, noise, waste and greenhouse gases.
- By greenbelt development for local bio-diversity management and conservation in coalition with local communities, authorities and other stakeholders.
- By reporting of non-compliances (if any), violations of environmental norms of the conditions of environment clearance/ consent/ NOC/ authorization and permission etc. relevant to the environmental conditions, wherever required to the director and occupier by the respective Unit Head, Administrative Head, Technical Head and Environment Head so as to fulfil the deviation from compliances as and when required.

J.K. Cement is implementing due diligence as an essential activity in mergers and acquisitions (M&A) transactions.

This policy will be reviewed periodically and updated as may be required. This Policy shall be made known to all our customers and stakeholders, apart from all our employees.



**Rajnish Kapur**

**Chief Operating Officer**

## ENVIRONMENT MANAGEMENT SYSTEM

### 1. LEGAL & OTHER REQUIREMENTS

a) The company is IMS certified and have established and maintained a procedure to identify, access and update legal and other requirements to which we subscribe, that are applicable to the environmental aspects / impacts. The list of legal and other requirements applicable to our operations are maintained separately and are communicated to our stakeholders. Main legal requirements are as follows:

- Environmental acts & rules
- Mines acts & rules
- Factory acts & rules
- Boiler acts & rules


### 2. OPERATIONAL CONTROL PROCEDURES

a) We have identified our operations and activities that are associated with Environmental aspects and OHS risks in line with our Environmental Policy.

- We have established and maintained SOP's to check out the deviations from Environment Management System.
- We have maintained rule and regulation register comply with legal and other requirement.
- We ensure to review control measures and SOP's on regular intervals, effectiveness of system checked by IMS audit and necessary implement.

b) Relevant Operational Control Measures

- Limestone mines operation- Water sprinkling on the haulage road and at unloading point (crusher), raw material transportation by covered belt and emission control system at transfer points.
- Clinkerization- Covered storage of raw materials, petcoke and coal, clinker in silos, use of high efficient pollution control measures such as ESP, Bag house, bag filters at all transfer points, coved conveyors and De-NOx system etc.
- Cement Grinding & Packing- Bag Filters at all transfer points, storage of fly ash in silo and pneumatic Fly ash handling, automatic bag filing machines, use of tarpaulin to each truck and wagon and vacuum sweeping machine.
- Storage in yard- Covered.
- Utility operation- Management of waste/used oil, oily wastes and management by 100% recycling/ sold to authorized recycler in process to maintain ZLD and treatment of domestic sewage water in STP to use for plantation and process.
- General- Dust control by good housekeeping & maintenance, use of dust extraction and recycling systems to remove dust from work areas, contractor activities and task observations.
- Use of proper personal protective equipment (PPE).
- Minimum 33 % plantation in the project area with native species in a time bound manner.

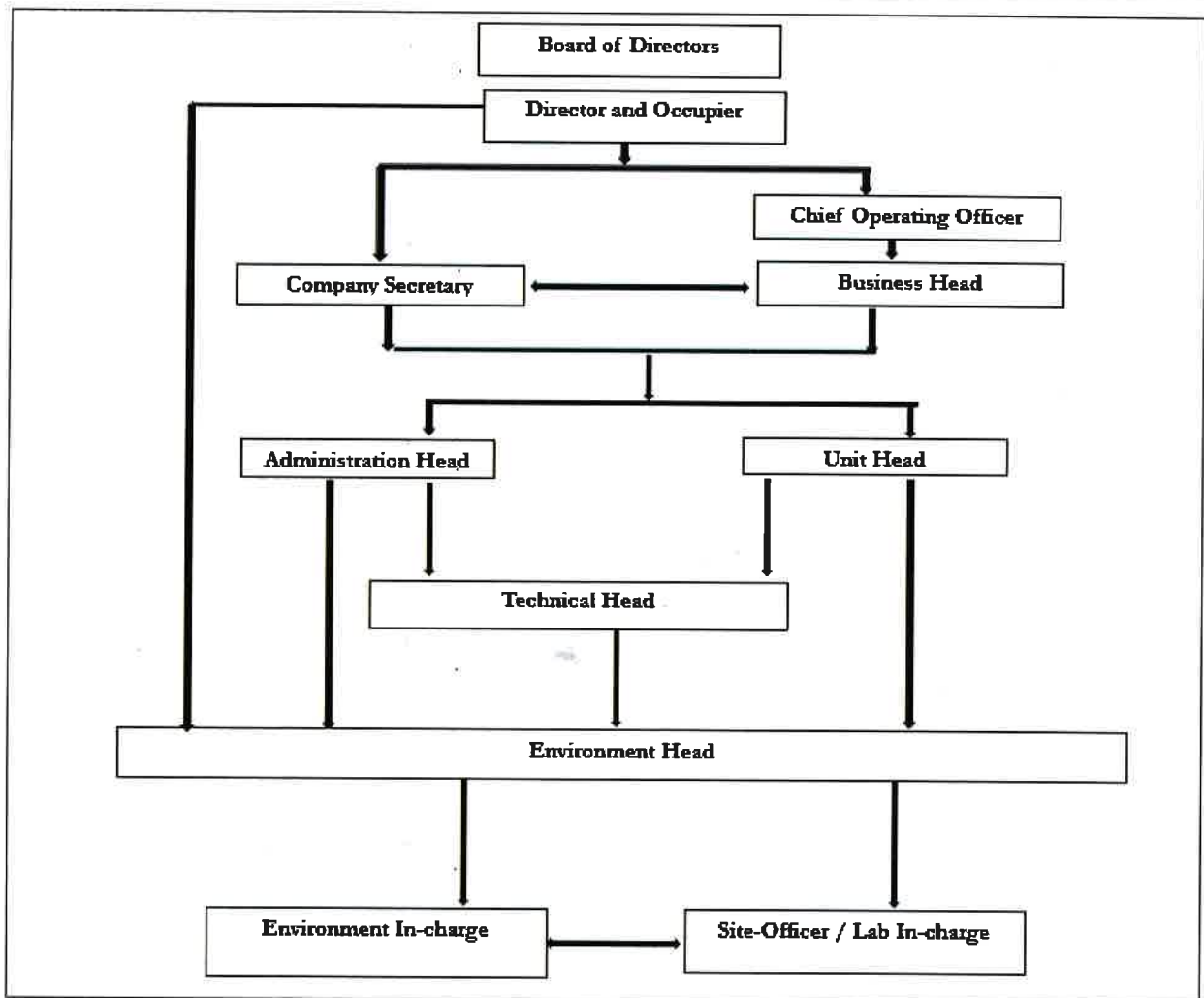


**Rajnish Kapur**  
Chief Operating Officer

### 3. ROLES & RESPONSIBILITIES

We have established, implemented and maintained EMS to meet its requirements at all of our locations within the organizational boundaries. Roles and responsibilities of various personnel, who manage, perform and verify the activities and their impacts on environment and/or OH&S have been defined by the top management as per hierarchy or administrative order by board of directors.

The below organizational structure Management Cell is responsible for any non-compliance/ infringement/ deviation/ violation of the environmental or forest norms under the supervision of Board of Directors.




**Rajnish Kapur**  
**Chief Operating Officer**