

Precautions

Follow the suggested application guidelines to ensure desired results. JK Cement ShieldMaxX is formulated with **Active SiH₄ Molecules** to enhance water repellent properties of the product and helps in protecting walls from dampness. Before application of JK Cement ShieldMaxX, the source of water leakage must be fixed in order to get the desired performance of the product.

Technical Specification

Properties	Appearance (Visual)	Water Putty Ratio % (Weight Per Volume)	Water Absorption (By Karsten Tube Horizontal & Vertical) 06 Hours @ 14 days (ML)	Compressive Strength @ 28 Days (N/mm ²)	Water Absorption Coefficient @ 28 Days (Kg/m ² h ^{0.5})	Coverage Sq. ft./ kg (2 coats)**
Specification Range	White	38% to 40%	≤ .0.8	3.5-7.5	≤ 1.0	20-22
JK Cement ShieldMaxX	White	38%	0.3	6	0.3	21
Reference Test Methods	Visual	JKITP-PL-1.4	JKITP-PL-1.9 (Ref. Karsten Tube)	JKITP-PL-1.11 (Ref. EN 1015-11)	DIN 52617	JKITP-PL-1.17

** Coverage depends on climatic conditions and substrate

Storage

Store the bags on an elevated dry platform made of bricks/timber/concrete. Use First In First Out (FIFO) system for storage. The bags should be kept in shade away from direct sunlight, moisture and frost.

Safety

In case of contact with skin, wash with plenty of water and if irritation persists consult a physician immediately. Keep away from children.



Area of Application



JK Cement Ltd.

Registered Office

Kamla Tower, Kanpur-208001, Uttar Pradesh

Telephone : 0512 2371478-81, Fax : 0512 2399854 Website : www.jkcement.com

Customer Helpline No. : 1800 102 8868



Disclaimer: The information contained within this Data Sheet is based on information believed to be reliable at the time of its preparation. M/s. JK Cement Ltd. will not be liable for loss or damage howsoever caused including liability for negligence, which may be suffered by the user of the data contained herein. It is the user's responsibility to conduct all necessary tests to confirm the suitability of any product or system for their intended use. No guarantee of results is implied since conditions of use are beyond our control.

JK CEMENT ShieldMaxX Universal Waterproof Putty



From the makers of



White Cement Based Putty

JK Cement is one of the leading cement manufacturers in the Country that has partnered the Nation's multi-sectoral infrastructure needs on the strength of its product excellence, customer orientation and technology leadership. A pioneer in the White Cement industry, the Company is the 2nd largest producer of white cement and wall putty in the Country and the 3rd largest white cement manufacturer in the world.

JK Cement ShieldMaxX is distributed through a pan India network of dealers and retailers of JK White Cement.

JK CEMENT ShieldMaxX Universal Waterproof Putty

JK Cement ShieldMaxX is a white cement based Universal Waterproof Putty with Active SiH₄ Molecules. Its ready to use property makes it suitable for both interior and exterior surfaces. The advanced formulation of the product protects the walls from dampness. It also provides a velvet like finish along with higher coverage.



Features

Available Pack :
20 Kg & 5 Kg Bag

(Shelf life: 12 months from the date of manufacturing in unopened condition. Store in a cool & dry place.)



Coverage
**20Sq.ft. per kg in
2 coats***



Drying time
(touch dry):
4 to 6 hours

Recommended Usage :
JK Cement ShieldMaxX Universal waterproof putty is suitable for Bricks, Solid or Hollow Blocks, AAC Blocks, Concrete Surface, Plaster Board on RCC/MIVAN/POP or similar surfaces. It can be used on new as well as old surfaces.



Benefits



Damp Resistance

JK Cement ShieldMaxX contains Active SiH₄ Molecules, which reacts with Silica particles to form multiple layers of tightly knit & impregnable micro webs, resulting in water repulsion, thus protecting the walls from dampness.



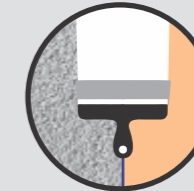
Longer Paint Life

JK Cement ShieldMaxX is formulated with advanced German technology, which helps in protecting the walls from dampness & efflorescence, resulting in longer paint life.



Anti-Efflorescence

Salt requires water as a medium to travel. JK Cement ShieldMaxX hinders the movement of water, because of its revolutionary micro web formation technology thereby eradicating salt leaching on the coated surface.



Versatile

Ideal for both new painting and repainting.

How to Apply

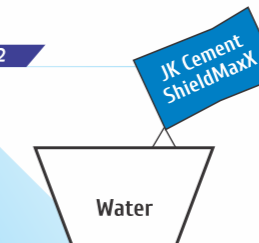
Step-1



Surface Preparation

- Surface should be firm and free from oil, dust and dirt & it should be cleaned with the help of a suitable cleaning object like wire brush / coir brush, followed by jet wash / water splash
- Any holes and cracks should be repaired prior to application

Step-2



Preparation of Mix

- Mix JK Cement ShieldMaxX Universal Waterproof Putty with 35%-40% clean potable water (by weight)
- Mix thoroughly to make a uniform smooth lump-free paste. Keep mixing for at least 5-7 minutes preferably by a Mechanical stirrer

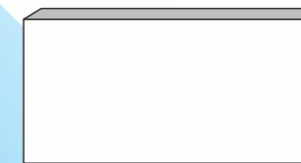
Step-3



Application Step 1

The thoroughly mixed mass is applied on the pre-wet wall surface from bottom to top in the upward direction uniformly with the help of a putty blade or similar tools

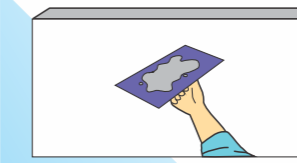
Step-4



Application Step 2

Apply the first coat on prepared surface and the putty applied surface should be left to dry for 4-6 hours, based on the humidity & ambient temperature. The optimum thickness of each coat should be between 0.5 to 1.0 mm and the thickness of the total coats should not exceed 1.5-2.0 mm

Step-5



Finishing Coat

Complete coating of surface by applying second coat of JK Cement ShieldMaxX Universal Waterproof Putty

Step-6



Drying

Leave the wall to dry for 2-3 days before paint application

Step-7

Finishing

Clean the wall with a dry cotton cloth to remove dust, dirt etc. and the smooth wall is ready for a top coat of premium paint



* Notes: Sanding of dried surface before paint application is non mandatory, yet if required, a very fine waterproof Emery Paper 300 No. may be used to provide extra smoothness to the prepared surface.