

Reg./AD & mail

JKC/ENV/EC/13 B/

Date: 23. 05.2025

The Director,
Ministry of Environment, Forest & Climate Change (Integrated Regional Office)
A-209 & 218, "ARANYA BHAWAN", Jhalana Institutional Area, Jaipur-302004
Tel No: 0141-2713786, 2713778 Email: iro.jaipur-mefcc@gov.in

Subject: Compliance Report of Environmental Clearance conditions for Expansion of Grey Cement production capacity from 13,33,530 TPA to 13,69,830 TPA by debottlenecking / internal modification and product mix change of Line-1 (i.e. production of both grey and white clinker & cement from existing grey facility) by implementation of white & grey convertible facility in both Line - I & Line- II without any change in total granted capacity of Grey Clinker (8,77,950 TPA), White Clinker (4,95,000 TPA) & White Cement (5,54,400 TPA) at Village: Gotan, Tehsil: Merta, District: Nagaur (Rajasthan) by M/s. JK Cement Works, Gotan (Unit of J.K Cement Ltd.)- Reg. Environment Clearance under the provision of para 7 (ii) of EIA Notification, 2006.

Ref.: EC letter No. J-11011/63/2008-IA-II dated August 18, 2008 & Letter No. EC22A009RJ183791 File no. IA-J-11011/63/2008-IA-II(I) dated 27.05.2022

Sir, Following is the compliance status of environment clearance for production of cement as above referred letter:

Name of the Project : Expansion of Grey Cement line-I from 471900 TPA to 508200 TPA with convertible facility - White Cement production 242659 TPA (Line – 2 project work is hold.)
Period of EC Compliance : From 1st October -2024 to 31st March-2025

SPECIFIC CONDITIONS:

Sr.	Conditions	Compliance Status
i	Three tier green belt are from 19ha. to 23ha. To achieve 33% of the project area shall be completed by monsoon season 2022 with native species all along the periphery of the project site of adequate width and tree density shall not be less than 2500 per ha. Survival rate of green belt developed shall be monitored on periodic basis to ensure that damaged plants are replaced with new plants in the subsequent years. Compliance status in thin regard, shall be submitted to concerned Regional Office, of the MOEF&CC.	We have developed and well maintained more than 33% green belt area of plant area which is tree sapling of Neem, Desi Ashok, Pendular Ashok, Arjun, conocarpus, State Tree Khejri etc. has been planted around the plant boundary, nearby area, colony area. A total of 24.55 hectares area of plantation has developed with 44563 nos. surviving saplings and 67.02% survival rate. Gap filling is doing in every monsoon for increasing density of plants. this monsoon session we have planted 1648 plants. Refer layout attached Annexure-1(presently we are plan for upcoming monsoon season more dense aprox 3000 trees.
ii	Greeting and paving shall be implemented in the plant area to arrest soil erosion and dust pollution from the exposed soil surface.	We have already taken care for controlling the fugitive dust emission by adopting the better house-keeping, concreting the movement areas and development of green belt.

Corporate Office

Prism Tower, 5th Floor, Ninaniya Estate,
Gwal Pahari, Gurugram - 122102, Haryana
+0124-6919000
admin.prismt@jkcement.com
www.jkcement.com

JK SUPER CEMENT
BUILD SAFE

Manufacturing Units at :
Nimbahera, Mangrol, Gotan (Rajasthan) | Muddapur (Karnataka)
Jharli (Haryana) | Katni, Panna (M.P.) | Aligarh, Hamirpur (U.P.)
Balasinor (Gujarat) | Fujairah

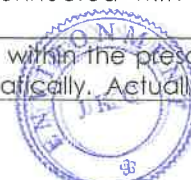
JKcement
WallMaxX
White Cement Based Putty



Registered Office : Kaml Tower, Kanpur-208001, U.P., India. +91-512-2371478 to 85 +91-512-2399854 www.jkcement.com

Jodhpur Office : 182, Gopi Krishna Vihar, Near Guru Ka Talab, Near Pratap Nagar, Jodhpur-342001. +0291-2432021, 2433072

iii	Ammonia Gas Detectors shall be installed at the storage site and the kiln stack for detecting leakage / seepage of ammonia gas.	We have installed Ammonia Gas Detectors at the storage site and the kiln stack for detecting leakage / seepage of ammonia gas. (SNCR)
iv	Particulate matter emission from all the stacks shall not exceed 30mg/Nm ³ .	Particulate matter emission from all the stacks are under 30mg/Nm ³ . & OCEM system has installed at site for monitoring & connected with PCB's servers.
v	All stockyards shall have impressive flooring and shall be equipped with water spray system for dust suppression. Stock yards shall also have garland drains to trap the run of material.	All stockyards is maintained flooring and equipped with water spray system for dust suppression (As required & Designed).
vi	All internal roads and connecting road from project site to main highway shall be developed and maintained with suitable Million Axle Standard (MSA) as per traffic load due to existing and proposed project.	Agreed, Factory roads connected with State highway directly & Axle Standard (MSA) maintained as per traffic norms.
vii	Slip road shall be provided at gates and along crossing on main gate.	We have provided at sites,
viii	Covered shed and toe walls shall be provided for raw material storage to check any attrition of raw materials. Storage shed shall have garland drains, material trap and shall be built on concrete platform.	Covered shed and toe walls provided for raw material storage to check any attrition of raw materials. Storage shed have garland drains, material trap and built on concrete platform.
ix	Performance monitoring of all pollution control device shall be carried out annually and report shall be submitted o MEF&CC, Regional Office.	Environmental Management cell has been setuped. The Unit Head looks after the total control of pollutions, monitoring & maintenance of pollution control devices with the help of Technical -Head along with mechanical department, Environment Department, Environment Officers, Engineers (Chemical) & a trained team. Periodically & Annually reports are submitted to MOEF&CC, Regional Offices.
x	Following addition arrangements to control fugitive dust shall be provided. Fog/ Mist sprinklers at al conveyors point and on bulk raw material storage area (at the transfer points) like Iron Ore, Coal, and Fly ash and similar solid waste storage areas. Proper covered vehicle shall be used while transport of material. Wheel washing mechanism shall be provided in entry and exists gate.	As Below Status Mist sprinklers installed at all conveyors point and on bulk raw material storage area (at the transfer points) Proper covered vehicle are using for finished product and ensuring at factory gate level. Wheel washing mechanism not required due to dry process and all road maintained pacca.
xi	1166 KLD water after expansion shall be met from ground water sources as approved by the competent authority. Surface water sources like mine pit water, rain water harvested water and use of treated sewage water from nearby municipal corporation shall be explored and action plan in thin regard shall be submitted to the Regional Office of the MOEF&CC for gradual phase out of the ground water in a time frame of two years from the date of issue of EC.	We assure for the same i. e. the water consumption shall not exceed the limit. Permission for the same has been obtained from CGWA. Surface water sources like mine pit water, rain water harvested water and use of treated sewage water from nearby municipal corporation Water study Report attached. presently no any possibility in this feasibility report which was carried out by accredited consultant. Because the water is very precious for us.
xii	Rain Water Harvesting shall be carried out to recharge 200% of annual ground water withdrawal as committed by the PP.	We have provided very well Rainwater harvesting System. Drawing and other in Letter No.- JKC/ENV/13 A/ dated 26.11.2014 and subsequent correspondence to CGWA compliances on yearly basis.
xiii	Particulate matter emissions from all the stacks shall be less than 30 mg/Nm ³ .	Particulate matter emission from all the stacks are under 30mg/Nm ³ . & OCEM system has installed at site for monitoring & connected with PCB's servers.
xiv	Petcoke dosing shall be controlled automatically to control SO ₂ emission from chimney within the	SO ₂ emission from chimney within the prescribed limit and controlled automatically. Actually SO ₂



	prescribed limit.	emission is very lesser compare to prescribed limit.
xv	Dioxin and furans shall be monitored twice a year during coprocessing of hazardous waste and report shall be submitted to the Regional Office of the MOEF&CC.	Agreed, we have ensured and reports submitted to the Regional Office of the MOEF&CC.
xvi	Develop a control strategy and plan that incorporates the pollution control measures. The clean air practice shall be adopted like mechanical collectors, wet scrubbers, fabric filters (bag house) electrostatic precipitator, combustion system (thermal oxidizers), condensers, absorbers and biological degradation. Controlling emission related to transportation shall include emission controls on vehicle as well as use of cleaner fuels.	Environmental Management cell has been setup. The Unit Head looks after the total control of pollutions, monitoring & maintenance of pollution control devices with the help of Technical -Head along with mechanical department, Environment Department, Environment Officers, Engineers (Chemical) & a trained team. Periodically & Annually reports are submitted to MoEF&CC, Regional Offices.

GENERAL CONDITIONS:

Sr.	Conditions	Compliance Status
I	Statutory Compliance	
i.	The Environment Clearance (EC) granted to the project/ activity is strictly under the provisions of the EIA Notification, 2006 and its amendments issued from time to time. It does not tantamount / construe to approval/ consent / permission etc. required to be obtained or standards / conditions to be followed under any other Acts/ Rules / Subordinate legislation etc. as may be applicable to the project.	Agreed, we are follow & complying.
II	Air Quality Monitoring and Preservation	
i.	The project proponent shall install 24X7 continuous Monitoring System (CEMS) at process stacks to monitor stack emission as well as 4 nos. Continuous Ambient Air Quality Stations (CAAQS) for monitoring of AAQ parameters with respect to the standards prescribed in Environment Protection Rules, 1986 as amended from time to time. The CEMS and CAAQMS shall be connected to SPCB and CPCB online server and calibrate these systems from time to time according to equipment supplier specification through labs recognized under Environment Protection Rules, 1986 or NABL accredited laboratory.	Continuous Monitoring System (CEMS) is installed at all process stacks & Four CAAQM stations are installed at site and connected to RSPCB & CPCB servers for online monitoring. Apart from this, we also get monitoring done from approved labs on regular basis. Besides, RSPCB also conducts monitoring inspections from time to time. Refer recognized Lab Monitoring reports Attached: Annexure-2
ii.	The project proponent shall monitor fugitive emissions in the plant premises at least once in every quarter through labs recognized under Environment Protection Rules, 1986.	We have monitor fugitive emissions in the plant premises at least every quarter on specific fugitive emissions areas . We are already taking care for controlling the fugitive dust emission by adopting better house-keeping, concreting the movement areas and development of green belt. Bag filters have been provided at material transfer points, packing, loading & unloading points. Further, quarterly AAQM reports are submitted accordingly.
iii.	The project proponent shall provide leakage detection and mechanized bag cleaning facilities for better maintenance.	Every Bag filter (plus jet) facility equipped the leakage detection system.
iv.	The project proponent ensure covered transportation and conveying of ore, coal and other raw material to prevent spillage and dust generation; use closed bulkers for carrying fly ash.	The covered transportation and conveying for ore, coal and other raw material has provided to prevent spillage and dust generation. Transportation of all powder form of raw materials & finished product are done by means of covered conveyor system & fly ash handled through bulkers with pneumatic system.
v.	The project proponent shall provide wind shelter fence	Agreed, if required



	and chemical spraying on the material stock piles.	
vi.	Ventilation system shall be designed for adequate air charges as per the prevailing norms for all tunnels, motors houses and cement bagging plants.	We have provided proper Ventilation system for all required sites.
III	WATER QUALITY MONITORING AND PRESERVATION	
i.	The project proponent shall install 24X7 continuous effluent monitoring system with respect to standards prescribed in Environment (Protection) Rules, 1986 vide G.S.R. No. 612 (E) dated 25th August 2014 (Cement and subsequent amendment dated 09th May, 2016 (Cement) and 10th May, 2016 in case of coprocessing cement) as amended from time to time.	The no any process effluent generated from cement process. Only domestic water effluent generated and treated at STP. Treated water use in plantation and maintained ZLD premises. We have install 24X7 continuous effluent monitoring PTZ camera & flow meter with respect to standards. Both are connected with PCB's servers.
ii	The project proponent shall regularly ground water quality at least twice a year (pre-and post-monsoon) at sufficient number of piezometers/sampling wells in the plant and adjacent area through labs recognized under Environmental (protection) Act 1986 and NABL accredited laboratories.	We are conducted the water testing as per norms twice a year by approved lab and maintained records. For ground water level monitoring we have install two number piezometers and connected with vendor cloud servers for real-time monitoring.
iii	Sewage Treatment Plant shall be provided for treatment of domestic wastewater to meet the prescribed standards	Sewage Treatment Plant has installed and all domestic waste water treated and use in plantation with meet the prescribed standards. RSPCB also conducts monitoring inspections from time to time.
iv	Garland drains and collection pits shall be provided for each stock pile to arrest the run-off in the event of heavy rains and check the water pollution due to surface run off.	Agreed. garland drains available.
V	Water meters shall be provided at the inlet to all unit processes in the cement plant	Water meters installed
vi	The project proponent shall make efforts to minimize water consumption in the cement plant complex by segregation of used water, practicing cascade use and by recycling treated water.	We are doing efforts to minimize water consumption in the cement plant with new technology adaption.
vii	Tyre washing facility shall be provided at the entrance and exit of the plant gates.	Agreed, if required, Actually no required because of no any sludge/ other material generated from the process.

IV Noise monitoring and prevention:

i	Noise quality shall be monitored as per the prescribed Noise Pollution (Regulation and Control) Rules, 2000 and report in this regard shall be submitted to regional officer of the Ministry as a part of six-monthly compliance report.	Regular noise monitoring is being done around plant boundary. Noise levels are well within stipulated norms. Proper enclosures have been provided at high noise area. PPEs have been provided to all the workers. Recognized Lab Monitoring Reports Attached: Annexure-2
---	--	--

V Energy Conservation Measures:

I	Waste heat recovery system shall be provided for kiln and cooler	Agreed – Line-II
ii	The project proponent shall make efforts to achieve power consumption less than 65 unit/ton for Portland pozzolana Cement (PPC) and 85 unit/ton for the ordinary Portland cement (OPC) production and thermal energy consumption of 670 Kcal/Kg of clinker.	Agreed, we will efforts to achieve.
iii	Provide solar power generation on roof tops of buildings, for solar light system for all common areas street lights, parking around project area and maintain the same regularly.	We have installed solar power generation on roof tops 100 kWh for light system.
iv	Provide the project proponent for LED lights in their offices and residential areas.	We have provided all premises LED lights in their offices and residential areas.



VI Waste management:

i	Used refractories shall be recycled as far as possible	Agreed, we have provided recyclers.
---	--	-------------------------------------

VII Green belt

i	The project proponent shall prepare GHG emissions inventory for the plant and shall submit the program for reduction of the same including carbon sequestration by tree in the plant premises.	M/s JK Cement Ltd are make sustainability report and track of targets GHG & others. Every year published IR report by third party & provided on site for public domain
ii	The project proponent shall submit a study report on Decarburization program which would essentially consist of company's carbon emissions, carbon budgeting/balancing carbon sequestration activities and carbon capture, use and storage and offsetting strategies. Further, the report shall also contain time bounding action plan to reduce its carbon intensity of its operations and supply chain energy transition pathway from fossil fuels to renewable energy etc. All these activities/ assessment should be measurable and monitor able with defined time frames	

VIII. Public Hearing and Human issues:

i	Emergency preparedness plan based on the hazardous identification and Risk Assessment(HIRA) and Disaster Management Plan shall be implemented.	Emergency preparedness plan prepared based on the hazardous identification and Risk Assessment (HIRA) and Disaster Management. The unit is already IMS certified (ISO 9001, ISO 14001 & ISO 45001) and the plan copy is displayed at sites.
ii	The project proponent shall carry out heat stress analysis for the workmen who work in high temperature work zone and provide personnel protection equipment(PPE)as per norms	The safety Department are established and well qualified officers given responsibility of sites which have ensure the personnel protection equipment (PPE)as per norms
ii	Occupational health surveillance of the workers shall be done on a regular basis and records maintained.	Agreed, Periodic health checkup of all the employees have been conducted at our OHC (Dispensary) where all facilities are available. The records maintained Refer Report attached Annexure: -3

IX. Environment Management:

i	The project proponent shall comply with the provisions contained in this Minister's OM vide F. NO.22-65/2017-IA.III dated 30/09/2020	Agreed, we are comply
ii	The company shall have a well laid down environmental policy duly approved by the board of Directors.	The company has laid down environmental policy duly approved by the board of Directors. & available on company Website
ii	A separate Environmental Cell both at the project and company head quarter level, with qualified personnel shall be set up under the control of senior Executive, who will directly to the head of organization.	Environmental Management cell has been setup. The Unit Head looks after the total control of pollutions, monitoring & maintenance of pollution control devices with the help of Technical -Head along with mechanical department, Environment Department, Environment Officers, Engineers (Chemical) & a trained team.

X. Miscellaneous:

i	The project proponent shall make public the environmental clearance granted for their project along with the environmental conditions and safeguards at their cost by prominently advertising it at least in two local newspapers of the district or state, of which one shall be in the vernacular language within seven days and in addition this shall also be displayed in the project proponent's website permanently	Expansion EC: advertised in Rajasthan Dainak Navjyoti & Dainik Bhasker on dated 30.05.2022. Copies are already submitted to your good office earlier compliance report.
ii	The copy of the environment clearance shall be submitted by the project proponents to the head of local bodies, panchayats and municipal body in addition to the relevant offices of the government who in turn has to display the same for 30 days from date of receipt.	We have submitted the copy of the environment clearance Gram Panchayat Gotan within time frame dated 23.06.2022
iii	The project proponent shall upload the status of compliance of the stipulated environment clearance conditions, including result of monitored data on their web site and upload on half-yearly basis.	Agreed, we are complying



iv	The project proponent shall monitor the criteria of pollutants level namely: PM10, SO2, NOx (ambient levels as well as stack emissions) or critical sectoral parameters, indicated for the projects and display the same at a convenient location for disclosure to the public and put on the website of the company.	We are following NAAQs, 2009 and cement sector emission norms as per CTO.
v	The project proponent shall submit six monthly reports on the status of the compliance of the stipulated environmental conditions on the website of the ministry of environment, forest and climate change at environmental clearance portal.	Agreed, we are complying
vi	The project proponent submit the environmental statement for each financial year in Form-V to the concerned State Pollution Control Board as prescribed under the Environment(Protection) Rules, 1986, as amended subsequently and put on the website of the company	We are submitting every financial year in Form-V to the concerned State Pollution Control Board as prescribed and also put on the website of the company
vii	The project proponent shall inform the Regional Office as well as the ministry, the date of the financial closure and final approval of the project by the concerned authorities , commencing the land development work and start of production of the project	Agreed, for the same.
viii	The project proponent shall abide by all the commitments and recommendations made in the EIA/EMP report, commitments made during the public hearing and also that during the their presentation to EAC	Agreed
ix	No further expansion or modification in the plant shall be carried out without prior approval of the MoEF& CC	It shall be followed at all times. Changes if any shall be under taken with due permissions.
x	Concealing factual data or submission of false/fabricated data may result in revocation of this environmental clearance and attract action under the provisions of the Environment (Protection) Act 1986.	Agreed, Noted
xi	The ministry may revoke or suspend the clearance, if implementation of any of the above conditions is not satisfactory.	Agreed, Noted
xii	The ministry reserves the right to stipulate additional conditions if found necessary. The company in the time bound manner shall implement these conditions.	Agreed, Noted
xiii	The regional office of this Ministry shall monitor compliance of the stipulated conditions. The project authorities should extend full cooperation to the officer(s) of the regional office by furnishing the requisite data/ information/ monitoring reports.	Agreed, committed
xiv	Any appeal against this EC shall lie with the National Green Tribunal, if preferred , within a period of 30 days as prescribed under section16 of the National Green Tribunal Act, 2010.	Agreed, Noted

We hope you will find the document in order.

Thanking you,

Yours Faithfully,

For J K Cement Works, Gotan

Dr. Ranjeet Kumar Bagariya
Authorised Signatory

CC To:

Reg. A/d Member Secretary,

Rajasthan State Pollution Control Board
4, Institutional Area, Jhalana Doongari, Jaipur (Raj.) – 302 004

Reg. A/d Regional Officer,

Rajasthan State Pollution Control Board,
First Floor, Sehkar Bhoomi Vikas Bank Ltd., Nagaur- 341001
as above

Encl:

CPP



JK Cement Works, Gotan

A Unit of JK Cement Ltd.

CIN : L17229UP1994PLC017199

▲ P.O. Gotan - 342 902, Dist:- Nagaur (Rajasthan), India

☎ +01591 230201-03 (PBX), 230976 (D), ☎ +01591 230206

🌐 www.jkcement.com

REGD. A/D

JKCW/ENV/04/

Date: 15.01.2025

Member Secretary,

Rajasthan State Pollution Control Board,

4, Institutional Area, Jhalana Doongari, Jaipur (Raj.)- 302 004

C- 036

(Cement)

Subject: Quarterly Compliance Report of Consent to Operate Conditions under Air & Water Act of M/s JK Cement Works, situated at P.O. Gotan, Distt. Nagaur, Rajasthan for the period from Oct-2024 to Dec-2024 (Quarter-3) of FY 2024-25.

Reference CTO's:

1. F(CPM)/Nagaur(Merta)/4(1)/2022-2023/2339-2341, Order No: 2022-2023/CPM/8613 dated 16/09/2022

2. F(CPM)/Nagaur(Merta)/4(1)/2022-2023/2345-2347, Order No: 2022-2023/CPM/8614 dated 16/09/2022.

Dear Sir,

As above subjected matter, submitting herewith the point - wise compliance report of the conditions of consent to operate as per communicated board vide letter no. mentioned as reference. The following is the compliance status of CTO under Air & Water Act for the period Oct-2024 to Dec-2024 (Quarter-3) of FY 2024-25 is attached herewith.

We hope that you will find all the information in order.

Thanking you,

Yours faithfully

For J. K. CEMENT WORKS,



Dr. Rameesh Kumar Bagariya
Authorised Signatory

Copy To:

Reg. A/d

Regional Officer,

Rajasthan State Pollution Control Board

First Floor, Sehkari Bhoomi Vikas Bank Ltd., Nagaur- 341001

Encl: as above

Corporate Office

📍 Prism Tower, 5th Floor, Ninaniya Estate,
Gwal Pahari, Gurugram - 122102, Haryana

☎ +0124-6919000

✉ admin.prism@jkcement.com

🌐 www.jkcement.com

**JK SUPER
CEMENT**

BUILD SAFE

Manufacturing Units at :

Nimbahera, Mangrol, Gotan (Rajasthan) | Muddapur (Karnataka)

Jharli (Haryana) | Katni, Panna (M.P.) | Allgarh, Hamirpur (U.P.)

Belasinar (Gujarat) | Fujairah

JK Cement
WallMax X
White Cement Based Putty



Registered Office : 📍 Kamla Tower, Kanpur-208001, U.P., India. ☎ +91-512-2371478 to 85 ☎ 91-512-2399854 🌐 www.jkcement.com

Jodhpur Office : 📍 1B2, Gopi Krishna Vihar, Near Guru Ka Talab, Near Pratap Nagar, Jodhpur-342001. ☎ +0291-2432021, 2433072

M/S JK CEMENT WORKS, GOTAN
COMPLIANCE REPORT OF CONSENT TO OPERATE
FOR THE PERIOD: OCT-2024 to DEC-2024 (QUARTER-3) FY 2024-25

Compliance Conditions:

Sr.	Conditions	Compliance Status																							
1.	1. That this Consent to Operate is valid for period from 01/10/2022 to 30/09/2027 & 13/08/2022 to 31/07/2027.	Agreed.																							
2.	<div>2. That this Consent is granted for manufacturing/producing following products/by product or carrying out the following activities or operation/processes or providing following services with capacities given below:</div> <table><tr><th>Particular</th><th>Type</th><th>Quantity with Unit</th></tr><tr><td>Cement (Grey)</td><td>Product</td><td>508200.00 TPA</td></tr><tr><td>Clinker (Grey)</td><td>Product</td><td>262500.00 TPA</td></tr><tr><td>or Cement (White)</td><td>Product</td><td>242659 .00 TPA</td></tr><tr><td>or Clinker (White)</td><td>Product</td><td>216660.00 TPA</td></tr></table>	Particular	Type	Quantity with Unit	Cement (Grey)	Product	508200.00 TPA	Clinker (Grey)	Product	262500.00 TPA	or Cement (White)	Product	242659 .00 TPA	or Clinker (White)	Product	216660.00 TPA	Agreed.								
Particular	Type	Quantity with Unit																							
Cement (Grey)	Product	508200.00 TPA																							
Clinker (Grey)	Product	262500.00 TPA																							
or Cement (White)	Product	242659 .00 TPA																							
or Clinker (White)	Product	216660.00 TPA																							
3.	That this consent to operate is for existing plant process & capacity and separate consent to establish/ operate is required to be taken for any addition/ modification/alteration in process or change in capacity or change in fuel.	We are communicating our agreement for obtaining fresh Consent to Establish & Operate for further change / alteration / modification / expansion if any.																							
4.	<div>That the quantity of effluent generation along with mode of disposal for the treated effluent shall be as under:</div> <table><tr><th>Type of effluent</th><th>Max. effluent generation (KLD)</th><th>Recycled Qty of effluent (KLD)</th><th>Disposed Qty. of effluent (KLD) and mode of disposal</th></tr><tr><td>Domestic Sewage</td><td>7.2</td><td>Nil</td><td>7.2 To be treated in STP and to be used in plantation and horticulture</td></tr></table>	Type of effluent	Max. effluent generation (KLD)	Recycled Qty of effluent (KLD)	Disposed Qty. of effluent (KLD) and mode of disposal	Domestic Sewage	7.2	Nil	7.2 To be treated in STP and to be used in plantation and horticulture	<div>There is no industrial waste water generated from process. Domestic waste water generated from the plant office toilets, canteen, guesthouse and colony etc. is being disposed off through STP (capacity 300 KLD) and treated water is used in plantation activity. Details of STP treated water of plant and colony for the quarter is given below:</div> <table><tr><th colspan="3">STP Treated Water Details</th></tr><tr><th>Month</th><th>Total Treated Water (KL)</th><th>Daily (KL)</th></tr><tr><td>Oct-24</td><td>888</td><td>28.6</td></tr><tr><td>Nov-24</td><td>979</td><td>32.6</td></tr><tr><td>Dec-24</td><td>1251</td><td>40.4</td></tr></table> <div>Remark: As per issued CTO; daily domestic effluent generation permission of plant is 7.2 KL and colony is 56.0 KL; Total is 63.2 KL</div>	STP Treated Water Details			Month	Total Treated Water (KL)	Daily (KL)	Oct-24	888	28.6	Nov-24	979	32.6	Dec-24	1251	40.4
Type of effluent	Max. effluent generation (KLD)	Recycled Qty of effluent (KLD)	Disposed Qty. of effluent (KLD) and mode of disposal																						
Domestic Sewage	7.2	Nil	7.2 To be treated in STP and to be used in plantation and horticulture																						
STP Treated Water Details																									
Month	Total Treated Water (KL)	Daily (KL)																							
Oct-24	888	28.6																							
Nov-24	979	32.6																							
Dec-24	1251	40.4																							



5. That the sources of air emission along with pollution control measures and the emission standards for the prescribed parameters shall be under:

Sources of air Emissions	Pollution Control Measures	Prescribed	
		Parameter	Standard
One DG Set (350 KVA)	Acoustic enclosure, Safe Stack Height, as per ER IV	---	-----
Flyash handling	Adequate Stack Height, Bag House	Particulate Matter	30mg/Nm3
Limestone Crusher	Adequate Stack Height, Bag House	Particulate Matter	30mg/Nm3
One Cement Mill	Adequate Stack Height, Bag House	Particulate Matter	30mg/Nm3
One Cement Mill and Packing plant	Adequate Stack Height, Bag House	Particulate Matter	30mg/Nm3
One Grate cooler	Adequate Stack Height, ESP	Particulate Matter	30mg/Nm3
Petro Coke Mill	Adequate Stack Height, Bag House	Particulate Matter	30mg/Nm3
Raw Mill/Kiln	Adequate Stack Height, ESP	Particulate Matter SO2 NOx HCL Total Orgnic Carbon, HF, Total dioxins and furans, Cd+Th+their compounds Hg and its compounds Sb+As+Pb+Co+Cr+Cu+Mn+Ni+V+ their compounds	30mg/Nm3 100mg/Nm 800mg/Nm3 10 mg/Nm3 10 mg/Nm3 1 mg/Nm3 0.1ngTEQ/Nm3 0.05 mg/Nm3 0.05 mg/Nm3 0.5 mg/Nm3

Stacks are provided with Bag Filter/Bag House/ESPs along with safe and adequate infrastructure for monitoring. Monthly stack monitoring reports are being submitted to the board & Stack's OCEMS connected to your good office as well as CPCB servers. Total dioxins and furans, Others, parameters monitoring conducted by the approved laboratory. We are achieving all parameters in prescribed limit. Plant is under shutdown from 26.11.2024 onwards to till date.



6.	<p>That the domestic sewage shall be treated before disposal so as to conform to the standards prescribed under the Environment (Protection) Act-1986 for disposal in to inland Surface Water. The main parameters for regular monitoring shall be as under.</p> <table><tr><th>Parameters</th><th>Standards</th></tr><tr><td>Total Suspended Solids</td><td>Not to exceed 100mg/l</td></tr><tr><td>pH Value</td><td>Between 5.5 to 9.0</td></tr><tr><td>Oil and grease</td><td>Not to exceed 10mg/l</td></tr><tr><td>Ammoniacal Nitrogen(as N)</td><td>Not to exceed 50mg/l</td></tr><tr><td>Biochemical Oxygen Demand (3day at 27°C)</td><td>Not to exceed 30mg/l</td></tr><tr><td>Chemical Oxygen Demand</td><td>Not to exceed 250mg/l</td></tr><tr><td>Total Residual Chlorine</td><td>Not to exceed 01mg/l</td></tr></table>	Parameters	Standards	Total Suspended Solids	Not to exceed 100mg/l	pH Value	Between 5.5 to 9.0	Oil and grease	Not to exceed 10mg/l	Ammoniacal Nitrogen(as N)	Not to exceed 50mg/l	Biochemical Oxygen Demand (3day at 27°C)	Not to exceed 30mg/l	Chemical Oxygen Demand	Not to exceed 250mg/l	Total Residual Chlorine	Not to exceed 01mg/l	<p>There is no industrial waste water generated from process. Domestic waste water generated from the plant office toilets, canteen, guesthouse and colony etc. is being disposed off through STP (capacity 300 KLD) and treated water is used in plantation activity. STP treated water monitoring are carried out on regular basis. The all parameters are achieving in prescribed limits. STP Quality report of treated water for the quarter is attached as annexure-2.</p>
Parameters	Standards																	
Total Suspended Solids	Not to exceed 100mg/l																	
pH Value	Between 5.5 to 9.0																	
Oil and grease	Not to exceed 10mg/l																	
Ammoniacal Nitrogen(as N)	Not to exceed 50mg/l																	
Biochemical Oxygen Demand (3day at 27°C)	Not to exceed 30mg/l																	
Chemical Oxygen Demand	Not to exceed 250mg/l																	
Total Residual Chlorine	Not to exceed 01mg/l																	
7.	<p>That the industry shall obtain all requisite permission from concerning authority and district administration Nagaur for operation of plant</p>	<p>Agreed , if any</p>																
8.	<p>That the industry shall not install any additional plant and machinery for production of cement 471900 TPA and Clinker 262500 TPA capacity only.</p> <p>Expansion CTO:</p> <p>5. That this consent to operate is valid for the production of grey cement upto 36,300 TPA, white cement- 2,42,659 TPA and white clinker-2,16,660 TPA only in Line-</p>	<p>Agreed.</p>																
9.	<p>a. That this consent is being issued for the production of cement 471900 TPA and Clinker 262500 TPA capacity only. For any changes in quantity and number of product & by product the industry has to seek fresh consent to Establish/Operate.</p> <p>Expansion CTO:</p> <p>6. That the production of either grey clinker (2,62,500 TPA) or white clinker (2,16,660 TPA) shall be allowed at a time with convertible facility in both Line-I & (proposed). Total white & grey clinker production will remain same as per existing EC. Total white clinker production in both the lines will not exceed 4,95,000 TPA.</p> <p>7. That the expansion in grey cement production shall be by decottlenecking/internal modification and product mix change of Line-I. Production of either grey cement (5,08,200 TPA) or white cement (2,42,659 TPA) shall be taken at a time with convertible facility in both the lines. Production of white cement from Line-I shall be by changing raw mix & keeping white cement capacity same for both Line-I & (proposed) as granted in environmental clearance letter dated 06.12.2021 i.e. 5,54,400 TPA.</p>	<p>We are agreed this condition.</p>																
10.	<p>That no fuel other than coal/petcoke and LDO shall be used as fuel in the kiln and quantity of petcoke used shall not exceed to 46200 tons per annum (4340 tons per month) without prior consent from the State Board.</p>	<p>Agreed.</p>																
11.	<p>That this consent to operate is being issued considering capital investment of Rs.168.27 crores. In case project cost exceeds 168.27 crores the industry shall obtain modification in consent to operate after paying fee as applicable.</p> <p>Expansion CTO:</p> <p>That the industry shall not install any additional plant & machinery and total investment under this consent to operate shall not exceed Rs. 70 Lac. Moreover, no. additional water requirement shall be made.</p> <p>The guidelines on co- processing in cement/ power industries issued by central pollution Control Board shall be complied, if applicable.</p>	<p>We are agreed this condition.</p>																
12.	<p>That no hazardous waste/non -hazardous waste shall be used/co-processed in cement kiln without obtaining prior permission from CPCB & RPCB as per the provisions of Hazardous and Other Waste (Management & Trans boundary) Rules, 2016 and consent to establish/ operate from the state Board, if applicable.</p> <p>That the control of fugitive emission guidelines/ code of practice as issued by CPCB will be followed.</p>	<p>Agreed.</p>																
13.	<p>That all the recommendations made in the Charter of Corporate Responsibility for Environment Protection specified for Cement Plants shall be implemented.</p> <p>Exp. CTO- That the industry shall comply with the revised emission standards as notified by the MoEF & CC, Government of India, New Delhi for cement plants</p>	<p>We have been complying with the recommended conditions of Corporate Responsibility for Environment Protection, as applicable.</p>																



	vide gazette notification dated 25/08/2014 (without Co- Processing of Waste) subsequently amended on 9/05/2016 and notified vide notification dated 10/05/2016 [with co processing of waste], whichever is applicable.	We are complying.
14.	The guidelines on co- processing in cement/ power industries issued by central pollution Control Board shall be complied, if applicable. (& 11 in Ex CTO). That The industry shall comply with all the directions issued by MOEF & CC, Gol & CPCB for Compliance of revised emission norms.	We are complying. We are complying as per the applicable directions by MoEF & CC, Gol & CPCB.
15.	That the industry shall maintain online continuous monitoring system at the main stacks (Attached to kiln, coal Mill, cement mill and clinker cooler etc.) to monitor the emission level of particulate matter (PM), SO ₂ and NO _x and connectivity of the same shall be ensured with RSPCB/CPCB server during operation of the plant. The Industry shall comply with all the conditions of Environmental Clearance issued vide MoEF & CC letter no. -A-J-11011/63/2008-1 All(I) dated 27.05.2022	We have maintained Continuous Monitoring systems (CEMS) at all the main stacks and data are connected with the RSPCB & CPCB servers. We are complying this condition.
16.	That the industry shall comply with revised emission standards as notified by the MoEF & CC, Gol New Delhi for cement plants vide gazette notification dated 25/08/2014 (without co-processing of waste) subsequently amended on 9/05/2016 and notified vide notification dated 10/05/2016 (with co-processing of waste), whichever is applicable. That industry shall submit yearly Environmental Audit Statement on or before September of every year.	We are achieving the standards prescribed vide MoEF notification dated 25/08/2014 (without co- processing of waste) subsequently amended on 9/05/2016 and notified vide notification dated 10/05/2016 (With co- processing of Waste) and the data is connected to the RSPCB & CPCB servers. We are complying this condition.
17.	That the industry shall comply with all the directions issued by the MoEF & CC, Gol & CPCB for compliance of revised emission norms. *That the Cement Plant will comply with the standards as prescribed vide MoEF notification no. Gsr 826(E) dated 16 th November. 2009 with respect to National Ambient Air Quality Standards. [17].	Agreed, we are following all the directions issued by the MoEF&CC, Gol& CPCB for compliance of revised emission norms. *We are achieving the standards prescribed vide MoEF notification no. Gsr 826(E) dated 16 th November. 2009 with respect to National Ambient Air Quality Standards. The board w. r. t. particulate matter in stack emission and PM ₁₀ , PM _{2.5} , SO ₂ , NO _x , CO in ambient air. The monitoring results are being submitted to the Board on monthly basis. Four number of CAAQMS stations are connected to your good office as well as CPCB servers. Ambient Air Quality monitoring report is enclosed as Annexure-1.
18.	That the industry shall maintain stack of adequate height and adequate air pollution control measures at all the sources of air emissions so as to achieve the prescribed emission standards.	Adequate height of stack is maintained as per the standards. Adequate Pollution control measures like Bag Filter/Bag House/ESPs are provided at the Emission sources.
19.	That adequate infrastructure facility for stack emission monitoring shall be maintained at all the stack viz, limestone crusher, packer, Kiln, cooler, cement mills and coal mill etc.	All the stacks like limestone crusher, packer, Kiln, cooler, cement mills and coal mill etc. are provided with safe and adequate infrastructure for stack emission monitoring.
20.	That no additional source of air emission shall be installed without prior consent from the State Board.	Agreed.
21.	That closed conveyor belts shall be used for the transfer of material to minimize the fugitive emissions.	All material transfer points are covered for fugitive emissions control.
22.	That the industry shall maintain dust collection and extraction system to control fugitive dust emissions at all the transfer points and loading/ unloading areas.	Adequate measures are provided at the loading/ unloading areas.
23.	That all the raw materials and products shall be stored in closed covered shed.	All the raw grinded materials are stored in the closed covered shed.
24.	That cemented roads shall be provided & maintained in good condition inside the premises to minimize the fugitive emissions due to vehicular movements.	All roads are made of cement concrete to reduce the fugitive emission.

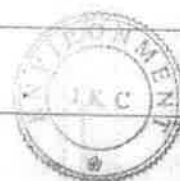


25.	That water sprinkling and cleaning of roads by vacuum cleaner shall be done regularly to control the fugitive emissions generated due to vehicular movements.	Road sweeping machines and vacuum cleaner are deployed for road and spillage cleaning.												
26.	That the power supply to the production/ process shall be interlocked with the pollution control equipment's that in the event of non- functioning of the pollution equipment/ of increase in levels of pollutants, the production process stops automatically.	Power supply to the production/ process are interlocked with the pollution control equipment's & in case of non- functioning of the pollution equipment/ of increase in levels of pollutants, the production process stops automatically.												
27.	That separate energy meter & hour meter shall be provided and maintained at all the air pollution control measures & ETP/STP and daily record of running hours of pollution control measures and energy consumption shall be maintained in logbook.	Separate energy meter & hour meter are installed and log book is maintained.												
28.	The industry shall comply with the MoEF, Government of India, Notification dated 14 th September 1999, amended up to date relating to fly ash management and shall provide relevant details to the state board, MoEF, and Government of India.	We are comply with.												
29.	That industry shall maintain continuous ambient air quality monitoring stations in all directions for monitoring of gaseous emissions and particulate matter in the ambient air and records of the same shall be submitted on quarterly basis to the state board.	We have installed the manual monitoring stations in all directions of plant and one continuous ambient air Quality monitoring station in one direction. The continuous ambient air quality monitoring station (CAAQMS) is also connected to your good office as well as central Pollution control board server. Manual monitoring data of all the four ambient air quality monitoring stations are sent to your good office with Monthly and quarterly compliance reports, while the CAAQMS LIVE data are recorded on your server. Analyzed Reports from approved lab are enclosed as Annexure-2												
30.	That the total fresh water consumption in the cement plant shall not exceed 1096.00 KLD (For process use- 850KLD, Cooling use-115 KLD, Domestic use-9.0KLD and green belt development and horticulture-122KLD) which shall be met from ground water.	Agreed. We are comply with.												
31.	That the water meter shall be installed and maintained at all the bore wells to measure the quantity of daily ground water withdrawal and record of the same shall be maintained on daily basis.	We have installed the water meters at site and record maintained on daily basis. Also telemetry system installed and connected with CGWA.												
32.	That the industry shall comply with the conditions imposed in NoC issued by the CGWA for abstraction of ground water vide NOC no CGWA/NOC/IND/REN/2/2021/6057 dated 30.07.2021 having capacity of ground water abstraction upto 1166.00 m3/day	Agreed. We are comply with. Water consumption for the quarter is given below- <table border="1"> <thead> <tr> <th>Month</th><th>Total Water Withdrawal (KL)</th><th>Daily (KL)</th></tr> </thead> <tbody> <tr> <td>Oct-24</td><td>17265</td><td>556.94</td></tr> <tr> <td>Nov-24</td><td>8506</td><td>283.53</td></tr> <tr> <td>Dec-24</td><td>2945</td><td>95.00</td></tr> </tbody> </table>	Month	Total Water Withdrawal (KL)	Daily (KL)	Oct-24	17265	556.94	Nov-24	8506	283.53	Dec-24	2945	95.00
Month	Total Water Withdrawal (KL)	Daily (KL)												
Oct-24	17265	556.94												
Nov-24	8506	283.53												
Dec-24	2945	95.00												
33.	That domestic waste water (7.2 KLD) generated from the plant premises shall be treated in existing Sewage Treatment Plant (STP) located within colony and shall be treated upto the standards as mentioned at condition no. 6 and shall be used for plantation/ horticulture purpose within the premises.	Agreed. We are comply with.												
34.	That no trade effluent and domestic waste water will be discharged inside or outside the factory premises in to a stream or well or sewer or on land.	No trade effluent is generated from the process. Factory office toilets & canteen domestic waste water is being treated through STP and treated water is used in plantation activity.												



35.	That suitable flow measuring devices/ meters at the inlet and outlet of sewage treatment plant shall be maintained. Daily record of domestic waste water generation and its treatment and utilization shall be maintained.	We have installed water meters at site and record maintained on daily basis.
36.	That industry shall comply with the provisions of Hazardous & Others Waste (Management, & Transboundary Movement) Rules, 2016 and record of daily hazardous waste generation and its disposal shall be maintained.	Agreed. We are following provisions of Hazardous & Others Waste (Management, & Transboundary Movement) Rules, 2016 and records are maintained.
37.	That the industry shall carryout effluent sampling/Stack Monitoring/ ambient air quality monitoring and submit quarterly analysis report from the state board laboratory/ laboratory recognized by Ministry of Environment & forests (MoEF), Government of India.	Agreed. Stack Monitoring/ ambient air quality monitoring is carried out from the state board laboratory/ laboratory recognized by Ministry of Environment & forests (MoEF), Government of India and is submitted periodically to your good office. Monitoring Results are given in Annexure-1
38.	That Suitable measure for rain water harvesting for artificial recharge of ground water shall be taken.	We have constructed nine number of rain water harvesting for artificial recharge of ground water.
39.	That the plantation in at least 33% of total area of the project in and around the cement plant shall be carried out & maintained.	We have maintained more than 33% of the plantation of total area at site. Photographs of the plantation are attached as annexure-3 .
40.	That the guidelines for pre-processing and co-processing of Hazardous and other waste in cement plants of July, 2017 issued by the Central Pollution Control Board shall be complied.	We are complying.
41.	That the industry shall procure pet coke from Board's registered producer or refineries and their Board's registered authorized dealers only or may import directly.	We are complying.
42.	That the industry may import the petcoke for its own use only and consignment shall be in the name of the industry. For import of petcoke the industry shall obtain registration from the State Board.	Agreed. We are complying.
43.	That the trading of pet coke by the industry is not permitted.	Agreed. We are complying.
44.	That the industry shall submit details of pet coke purchased from various sources during the month (imported, purchased from refineries or authorized dealers), quantity consumed during the month and opening and closing stock to the State Board on monthly basis.	We are complying.
45.	That the industry shall comply with all other directions as contained in the notification dated 19/01/2018 & 25/05/2018 related to sale and use of petcoke and "Guidelines for Regulation and Monitoring of Petcoke in India" dated 10/09/2018 issued by the MOEF&CC, New Delhi and any other directions issued by the MoEF&CC & State Pollution Control Board in this regard.	Agreed. We are complying.
46.	That this consent to operate shall be subject to compliance of direction or order passed by the Hon'ble NGT/Court of Law in the matter, if any.	Agreed.
47.	That no Single Use Plastic (SUP) item, which is CC, Government of India Environment, Forest and Climate Change (MOEF & notification dated 12.08.2021 shall be used in the industry/unit premises.	Agreed. We are complying this conditions in premises. The display boards are installed at site for awareness.
48.	That the industry shall also ensure the compliance of all the other conditions of consent order no. 2017-2018/CPM/5023 dated 19/12/2017 as amended vide letter dated 24.10.2018.	We are complying with conditions of vide Consent order the reports are being submitted to the Board on regular basis.
49.	That the industry shall submit the half yearly compliance report of all the above conditions to the State Board.	Agreed. We are comply with.
50.	That notwithstanding anything provided hereinabove, the Stat Board shall have power and reserves its right, as contained under section 27(2) of the Water Act and under Section 21(6) of the Air Act to review anyone or all the conditions imposed here in above and to make such variation as it deemed fit for the purpose of Air Act & Water Act.	Agreed.
51.	That the grant of this Consent to Operate is issued from the environmental angle only, and does not absolve the project proponent from the other statutory obligations prescribed under any other law or any other instrument in force. The	Agreed.

"Both Sides is Printed --Save Paper, Save Environment"



	sole and complete responsibility to comply with the conditions laid down in all other laws for the time- being in force, rests with the industry/unit/project proponent.	
52.	That the grant of this consent to operate shall not, in any way, adversely affect or jeopardize the legal proceeding, if any instituted in the past or that could be instituted against you by the State Board for violation of the provisions of the provisions of the Act or the Rules made there under.	Agreed.
53.	That the Project Proponent shall comply with provisions of the E-waste (Management) Rules, 2016 and ensure that e-waste generated by then is channelized through collection centre or dealer of authorized producer or dismantler or recycler or through designated take back service provider of the producer to authorized dismantler or recycler.	Agreed.
54.	That the Project Proponent shall maintain record of e-waste generated by them in Form-2 and make such records available for scrutiny by the Board.	Agreed. We are complying this condition
55.	That the Project Proponent shall file annual returns in Form-3, to the Board on or before the 30th day of June following the financial year to which that return relates.	Agreed. We are complying this condition
56.	That the transportation of e-waste shall be carried out as per the manifest system where by the transporter shall be required to carry a document (three copies) prepared by the sender, giving the details as per Form-6.	Not applicable. No any transportation of e-waste is carried out by industry.
57.	That the Project Proponent shall comply with provisions of the Batteries [Management and Handling] Rules, 2001 [as amended] and submit half yearly returns (as bulk consumer, Importer, auctioneer, recycler as the case may be) to the State Board as provided under Rule 10(2) (i) of the Battery (Management and Handling) Rules, 2001 (as amended). In case the Project Proponent is not a bulk consumer even then the used batteries shall be returned to the authorized dealers or recyclers only.	Agreed. We are complying every half yearly returns.
58.	That the record of batteries purchased and sold/ returned to registered dealers and/ or authorized recyclers shall be maintained and made available to the officers of the Board during inspections.	Agreed. We are complying this condition

COMPLIANCE FOR GENERAL CONDITIONS RELATED TO BOTH AIR & WATER ACTS:

- 1) Adequate arrangement with safe infrastructure to monitor it, dust collectors, bag houses Water sprinkle system/arrangements etc. have been provided & maintained to control the pollution generated during process/plant in operation.
- 2) Separate energy meters are provided in pollution control devices & log book are being maintained with all details.
- 3) D.G. Set only emergency power generation use.
- 4) Pollution control measures are having interlocking with production equipment, which is already in existing system.
- 5) We are monitoring the stack emissions/ambient air quality on regular basis and the monthly results & compliance of consent conditions are being submitted to the Board on monthly basis.
- 6) Industry is having the Authorization for disposal of Hazardous Waste under Hazardous Waste (Management & Handling) Rules 1989. We are complying the conditions under Manufacture, Storage and Import of Hazardous Chemicals Rules, 1989 and Battery (Management & Handling) Rules, 2001 as applicable.
- 7) Not applicable.
- 8) We are complying with the recommended conditions of Corporate Responsibility for Environment Protection, as applicable.
- 9) We are submitting the Environment Statement Report by September every year.
- 10) We have already taken care for controlling the fugitive dust emission by adopting the better housekeeping, water sprinkler system, covered storage yard, conveyer belt and concreting the movement areas and Green Belt Development.
- 11) We are communicating our agreement to inform concern departments in prescribed time frame to comply with the stipulated condition.
- 12) We are communicating our agreement to obey guidelines of Air act & Water act.
- 13) We are communicating our agreement to follow all the provisions of said acts.
- 14) We are communicating our agreement for this condition and fulfill the other statutory requirements under any law/ rules/ notifications, as applicable.
- 15) We are communicating our agreement to apply renewal of consent to operate in the prescribed format in given time frame.
- 16) We are communicating our agreement for this condition. Fresh Consent to Establish & Operate will be obtained for further change / alteration / modification / expansion if any.
- 17) Compliance Reports of stipulated conditions are being submitted on monthly/quarterly/ half yearly/yearly basis to concern departments.

"Both Sides is Printed ---Save Paper, Save Environment"



18) We shall cover more than 33% of total area in green belt. Tree sapling of Neem, Desi Ashok, Pendular Ashok, Arjun, Phycus panda, Kaner, Karanj, Duranta etc, has been planted in the plant area, colony area along with boundary side & nearby area.

COMPLIANCE FOR GENERAL CONDITIONS RELATED TO AIR ACT ONLY:

- 1) All stacks height is provided as per norms prescribed.
- 2) Safe and adequate infrastructure is installed for stack and ambient air quality monitoring on each station and regular monitoring has been conducted to insure compliance.
- 3) Not applicable
- 4) After the consultation and finalization from the board, we've installed the four CAAQM stations in the periphery of J K Cement Works industrial premises and monthly report is being sent to the board.
- 5) Pneumatic system has provided at loading, unloading, conveyer belts, storage yards etc, points for controlling the fugitive dust emission.
- 6) Acoustic enclosures are provided for DG Sets that's meeting prescribed norms.
- 7) Presently the DG Sets are not in operation (Only Emergency use) however confirming the emissions standards as prescribed.
- 8) Not applicable
- 9) We are monitoring the ambient noise level in the factory premises on monthly basis & results are well within the stipulated norms.

COMPLIANCE FOR GENERAL CONDITIONS RELATED TO WATER ACT ONLY:

- 1) Domestic waste water generated from the plant office toilets, canteen, guesthouse and colony etc, is being disposed off through STP (capacity 300 KLD) and treated water is used in plantation activity.
- 2) The entire treated water has been reused for water spraying for control of fugitive emission & green belt development. Well-designed sprinkle systems have been provided & maintained.
- 3) Not Applicable
- 4) Disposal of the domestic waste water generated from the plant office toilets, canteen, guesthouse and colony etc, is being disposed off through STP (capacity 300 KLD) and treated water is used in plantation activity.
- 5) Water meters installed at the source of water supply and maintained complete record.



STACK MONITORING REPORT

Annexure-I

Annexure:

MONTH: OCT-2024												
S. No	Stack mark	Stack attached to	Stack DIA (in mm)	Stack Height From G.L. (mtrs.)	No. of Samples	Operating conditions	Temp. of Gases (°C)	Velocity (m/sec)	Volume of Gas in Stack (Nm ³ / Min)	PM (Mg/ Nm ³)	Raw Mill/ Kiln SO _x (mg/ Nm ³)	Raw Mill/ Kiln NO _x (mg/ Nm ³)
1	A	Limestone Crusher	700	30	1	All readings were taken under normal operating conditions	42	9.2	201.79	14.06	34.14	476.67
2	B	Raw Mill/Kiln	2600	80	1		131	12.1	2830.12	21.02		
3	C	Grate Cooler	2200	30	1		113	10.1	1771.67	20.28		
4	D	Cement Mill	900	30	1		Plant Under Shutdown					
5	E	Cement Mill/ Packing	900	30	1	Plant Under Shutdown						
6	F	Petro Coke Mill	850	31	1	65	9.3	277.82	11.27			
7	G	Ready Mix Mortar Plant	750	30	1	47	8.1	200.11	15.32			
8	H	Flyash Handling	588	32	1	Plant Under Shutdown						



"Both Sides is Printed —Save Paper, Save Environment"

MONTH: NOV-2024

S. No	Stack mark	Stack attached to	Stack DIA (in mm)	Stack Height. From G.L. (mtrs.)	No. of Samples	Operating conditions	Temp. of Gases 0c	Velocity (m/sec)	Volume of Gas in Stack (Nm ³ / Min)	PM (Mg/ Nm ³)	Raw Mill/ Kiln SO _x (mg/ Nm ³)	Raw Mill/ Kiln Nox (mg/ Nm ³)
1	A	Limestone Crusher	700	30	1	All readings were taken under normal operating conditions	41	9.9	216.28	15.08	26.32	463.71
2	B	Raw Mill/Kiln	2600	80	1		135	12.4	2894.09	19.03		
3	C	Grate Cooler	2200	30	1		117	10.3	1789.46	17.96		
4	D	Cement Mill	900	30	1		Plant Under Shutdown					
5	E	Cement Mill/ Packing	900	30	1	Plant Under Shutdown	Plant Under Shutdown					
6	F	Petro Coke Mill	850	31	1		67	8.8	262.28	8.24		
7	G	Ready Mix Mortar Plant	750	30	1		48	8.3	204.00	16.69		
8	H	Flyash Handling	588	32	1		Plant Under Shutdown					



"Both Sides is Printed ---Save Paper, Save Environment"

MONTH: DEC-2024

S. No	Stack mark	Stack attached to	Stack DIA (in mm)	Stack Height From G.L. (mtrs.)	No. of Samples	Operating conditions	Temp. of Gases (°C)	Velocity (m/sec)	Volume of Gas in Stack (Nm ³ /Min)	PM (Mg/Nm ³)	Raw Mill/ Kiln SO _x (mg/Nm ³)	Raw Mill/ Kiln NO _x (mg/Nm ³)
1	A	Limestone Crusher	700	30	1	All readings were taken under normal operating conditions	Plant Under Shutdown	45	202.87	17.47	Plant Under Shutdown	Plant Under Shutdown
2	B	Raw Mill/Kiln	2600	80	1							
3	C	Grate Cooler	2200	30	1							
4	D	Cement Mill	900	30	1							
5	E	Cement Mill/ Packing	900	30	1							
6	F	Petro Coke Mill	850	31	1							
7	G	Ready Mix Mortar Plant	750	30	1							
8	H	Flyash Handling	588	32	1							

AMBIENT AIR QUALITY MONITORING REPORT

MONTH: OCT-2024

Sr.	DATE	LOCATION	PM10 µg/M3	PM2.5 µg/M3	SO2 µg/M3	NOx µg/M3	CO µg/M3
1	01.10.2024	Front of Weigh Bridge	51.85	31.36	12.0	17.0	1293
2	30.10.2024	Front of Weigh Bridge	37.74	30.02	14.0	18.0	1316
3	01.10.2024	Front of Crusher MCC Room	45.93	31.18	13.0	16.0	1304
4	30.10.2024	Front of Crusher MCC Room	52.72	34.26	15.0	17.0	1327
5	01.10.2024	Bachelor Hostel	51.09	32.66	13.0	18.0	1282
6	30.10.2024	Bachelor Hostel	42.21	33.93	16.0	19.0	1293
7	01.10.2024	Front of Pump House	49.42	31.17	13.0	16.0	1304
8	30.10.2024	Front of Pump House	47.34	32.66	14.0	15.0	1270

"Both Sides is Printed --Save Paper, Save Environment"

AMBIENT AIR QUALITY MONITORING REPORT

MONTH: NOV-2024

Sr.	DATE	LOCATION	PM10 µg/M3	PM2.5 µg/M3	SO2 µg/M3	NOx µg/M3	CO µg/M3
1	01.11.2024	Front of Weigh Bridge	49.36	34.28	13.0	16.0	1259
2	30.11.2024	Front of Weigh Bridge	48.49	32.83	11.0	15.0	1304
3	01.11.2024	Front of Crusher MCC Room	49.16	35.32	13.0	17.0	1270
4	30.11.2024	Front of Crusher MCC Room	50.82	27.57	12.0	18.0	1316
5	01.11.2024	Bachelor Hostel	45.65	31.35	14.0	15.0	1293
6	30.11.2024	Bachelor Hostel	45.17	29.83	13.0	19.0	1259
7	01.11.2024	Front of Pump House	44.16	32.80	14.0	17.0	1316
8	30.11.2024	Front of Pump House	51.35	31.31	11.0	16.0	1293

AMBIENT AIR QUALITY MONITORING REPORT

MONTH: DEC-2024

Sr.	DATE	LOCATION	PM10 µg/M3	PM2.5 µg/M3	SO2 µg/M3	NOx µg/M3	CO µg/M3
1	01.12.2024	Front of Weigh Bridge	45.01	32.98	13.0	16.0	1270
2	31.12.2024	Front of Weigh Bridge	54.96	29.49	11.0	15.0	1293
3	01.12.2024	Front of Crusher MCC Room	49.04	32.51	13.0	17.0	1304
4	31.12.2024	Front of Crusher MCC Room	46.52	31.02	12.0	18.0	1339
5	01.12.2024	Bachelor Hostel	47.46	37.89	14.0	15.0	1293
6	31.12.2024	Bachelor Hostel	42.40	27.87	13.0	19.0	1282
7	01.12.2024	Front of Pump House	46.92	26.49	14.0	17.0	1327
8	31.12.2024	Front of Pump House	45.72	33.63	11.0	16.0	1304

"Both Sides is Printed --Save Paper, Save Environment"



TEST REPORT



TC-11227

Sample Number: VTL/AA/01-04
 Name & Address of the Party: M/s JK Cement Works
 (Unit of JK Cement Ltd.) Vill. & Po.- Gotan,
 Dist.-Nagaur, Rajasthan

Report No.: VTL/A/2412300013-16/A
 Format No.: 7.8 F 02
 Party Reference No.: NIL
 Report Date: 04/01/2025
 Period of Analysis: 30/12/2024 - 04/01/2025
 Receipt Date: 30/12/2024

Sample Description: Ambient Air Quality Monitoring

General Information:-

Sample collected by

Instrument Calibration Status

Meteorological condition during monitoring

Date of Sampling

Ambient Temperature (°C)

Surrounding Activity

Scope of Monitoring

Sampling & Analysis Protocol

Sampling Duration

Parameter Required

: VTL Team
 : Calibrated
 : Clear sky
 : 24/12/2024 to 25/12/2024
 : Min. 11°C, Max. 22°C
 : Human, Vehicular & Plant Activities
 : Regulatory Requirement
 : IS-5182 & CPCB Guidelines
 : 24 hrs.
 : As Per Work Order

Sr.	Parameter	Protocol	Location & Lat. Long.				Unit	NAAQS 2009
			Front of Pump house 73°49'36"E 26°38'49"N	Front of Weight Bridge 73°43'46"E 26°38'46"N	Front of Crusher MCC Room 73°43'50"E 26°38'36"N	Bechelor Hostel 73°43'41"E 26°38'31"N		
1.	Particulate Matter (PM10)	IS: 5182 (P-23), 2006, RA 2022	62.59	65.12	67.12	61.20	µg/m³	100
2.	Particulate Matter (PM2.5)	IS 5182 (P-24) -2019	29.85	32.14	34.26	29.02	µg/m³	60
3.	Sulphur Dioxide (SO2)	IS: 5182 (P-2):Sec 1 2023	7.85	9.74	12.42	6.18	µg/m³	80
4.	Nitrogen Dioxide (NO2)	IS: 5182 (P-6), 2006 RA 2022	14.26	10.49	18.21	12.96	µg/m³	80
5.	Carbon Monoxide (as CO)	IS:5182 (P-10) -1999, RA2019 (NDIR)	0.63	0.68	0.70	0.60	mg/m³	4
6.	Benzene (as C6H6)	IS: 5182 (P-11)-2006, RA.2017	*BLQ(**LOQ1.0)	*BLQ(**LOQ1.0)	*BLQ(**LOQ1.0)	*BLQ(**LOQ1.0)	µg/m³	5
7.	Ammonia (as NH3)	IS 5182 (P-25) -2018	*BLQ(**LOQ10.0)	*BLQ(**LOQ10.0)	*BLQ(**LOQ10.0)	*BLQ(**LOQ10.0)	µg/m³	400
8.	Ozone (as O3)	IS:5182 (P-9):1974, RA.2019	11.26	15.29	14.23	12.45	µg/m³	180
9.	Lead (as Pb)	IS:5182 (P-32):2004, RA.2019	*BLQ(**LOQ0.02)	*BLQ(**LOQ0.02)	*BLQ(**LOQ0.02)	*BLQ(**LOQ0.02)	µg/m³	1
10.	Arsenic (as As)	VTL/STP/02/SOP/09	*BLQ(**LOQ0.5)	*BLQ(**LOQ0.5)	*BLQ(**LOQ0.5)	*BLQ(**LOQ0.5)	ng/m³	6
11.	Nickel (as Ni)	IS 5182 (P-26) -2020	*BLQ(**LOQ5.0)	*BLQ(**LOQ5.0)	*BLQ(**LOQ5.0)	*BLQ(**LOQ5.0)	ng/m³	20
12.	Benzo (a) Pyrene	IS:5182 (P-12):2004, RA.2019	*BLQ(**LOQ0.2)	*BLQ(**LOQ0.2)	*BLQ(**LOQ0.2)	*BLQ(**LOQ0.2)	ng/m³	1

-----End of the Report-----

Checked By



RK Yadav
 Lab Incharge
 Authorized Signatory

Term & conditions PTO

Approved & Certified EPA 1986 Recognised, ISO-9001 and OHSAS:45001 Certified

Vibrant Techno Lab Pvt. Ltd.

© SO-40, 3rd Floor, Narayan Vihar S, Ajmer Road, Jaipur Raj. 302020
 9929108691, 9810205356, 8005707098, 9549956601

0141-2954838

bd.vibranttechnolab.com

www.vibranttechnolab.com



TEST REPORT



TC-11227

Sample Number: VTL/AN/01-04
Name & Address of the Party: M/s JK Cement Works
(Unit of JK Cement Ltd.) Vill. & Po.- Gotan,
Dist.-Nagaur, Rajasthan
Sample Description: Ambient Noise Level Monitoring
Scope of Monitoring: Regulatory Requirement
Protocol Used: IS 9989
Instrument Used: SLM

Report No.: VTL/A/2412300013-16/A
Format No.: 7.8 F 04
Party Reference No.: NIL
Report Date: 04/01/2025
Receipt Date: 30/12/2024
Sampling Duration: 24 Hrs.
Sample Collected by: VTL Team
Instrument: VTL Team
Calibration Status: Calibrated

Ambient Noise Level Monitoring Results

General Information:-

Meteorological condition during monitoring

: Clear sky

Date of Monitoring

: 24/12/2024 to 25/12/2024

Time of Monitoring

: 06:00 AM to 06:00 AM

Ambient Temperature (°C)

: Min. 11°C, Max. 22°C

Surrounding Activity

: Human, Vehicular & Plant Activities

Parameter Required

: As per Work Order

Sr.	Test Parameter	Protocol	Location & Latlong							
			Front of Pump house		Front of Weight Bridge		Front of Crusher MCC Room		Bachelor Hostel	
			73°49'36"E 26°38'49"N		73°43'46"E 26°38'46"N		73°43'50"E 26°38'36"N		73°43'41"E 26°38'31"N	
1.	Leq, dB(A)	IS:9989-1981, RA 2020	Day Time	Night Time	Day Time	Night Time	Day Time	Night Time	Day Time	Night Time
			62.3	49.7	65.8	45.3	67.5	53.4	49.5	39.1

Category of Zones	Leq In dB (A)	
	Day	Night
Industrial	75	70
Commercial	65	55
Residential	55	45
Silence Zone	50	40

1. Day Time is from 6.00 AM to 10.00 PM.
2. Night Time is reckoned between 10.00 PM to 6.00 AM.
3. Silence Zone is defined as an area up to 100 m around premises of Hospitals, Educational and Courts. Use of vehicle horn, Loudspeaker and bursting of crackers is banned in these zones.
Note: Mixed categories of areas be declared as one of the four above mentioned categories by the competent Authority and the corresponding standards shall apply

End of the Report

Checked By



RK Yadav
Lab Incharge
Authorized Signatory

Term & conditions P10

Approved & Certified: EPA 1986 Recognised, ISO-9001 and OHSAS:45001 Certified

Vibrant Techno Lab Pvt. Ltd.

SC-40, 3rd Floor, Narayan Vihar S, Ajmer Road, Jaipur Raj. 302020
9929108691, 9810205356, 8005707098, 9549956601

0141-2954638

bd@vibranttechnolab.com

www.vibranttechnolab.com

"Both Sides is Printed ---Save Paper, Save Environment"



TEST REPORT



Sample Number : VTL/S/02
Name & Address of the Party : M/S JK Cement Works
(Unit of JK Cement Ltd.) Vill. & PO. - Gotan Dist -
Nagaur, Rajasthan

Report No. : VTL/S/2412300002/A
Format No : 7.8.F-03
Party Reference No : NIL
Report Date : 04/01/2025
Period of Analysis : 30/12/2024-04/01/2025
Receipt Date : 30/12/2024

Sample Description : Stack Emission Monitoring

General Information:-
Sampling Location : Ready Mix Mortar
Sample Collected By : VTL Team
Date of Sampling : 27/12/2024
Sampling duration (Minutes) : 34 Min. (11:00 to 11:34 Hrs.)
Stack attached to : Bag House
Make of stack : MS
Diameter of stack(m) : 0.75 M
Height of stack(m) : 30 M
Instrument calibration status : Calibrated
Meteorological Condition : Clear Sky
Ambient Temperature - T_a ($^{\circ}\text{C}$) : 22
Temperature of Stack Gases - T_s ($^{\circ}\text{C}$) : 65
Velocity of Stack Gases (m/sec.) : 7.74
Flow rate of PM (LPM) : 29
Flow rate of Gas (LPM) : -
Sampling condition : OK
Protocol used : IS 11255 & USEPA
Coordinates : --

S.No.	Parameters	Test Method	Results	Units	Limits
1	Particulate Matter (PM)	IS: 11255 (P-1) : 1985, RA 2019	18.55	mg/Nm ³	30

*BLQ= Below Limit Of Quantification, **LOQ= Limit Of Quantification

End of Report



Checked by



RK Yadav
Lab Incharge
Authorized Signatory



Form & conditions P10

Approved & Certified EPA 1986 Recognised, ISO:9001 and OHSAS:45001 Certified

Page No. 1/1

Vibrant Techno Lab Pvt. Ltd.

9 SC-40, 3rd Floor, Narayan Vihar S, Ajmer Road, Jaipur Raj 302020
9929108641, 9810205356, 8005707098, 9549956601

0141-2954638

www.vibranttechnolab.com

www.vibranttechnolab.com



TEST REPORT



Sample Number : VTL/S/01
Name & Address of the Party : M/S JK Cement Works
(Unit of JK Cement Ltd.) Vill. & PO. - Gotan Dist -
Nagaur, Rajasthan

Report No. : VTL/S/2412300001/A
Formal No : 7.8 F-03
Party Reference No : NIL
Report Date : 04/01/2025
Period of Analysis : 30/12/2024-04/01/2025
Receipt Date : 30/12/2024

Sample Description : Stack Emission Monitoring

General Information:-
Sampling Location : DG Set 350 KVA
Sample Collected By : VTL Team
Date of Sampling : 27/12/2024
Sampling duration (Minutes) : 33 Min. (10:00 to 10:33 Hrs.)
Stack attached to : Acoustic Encloser
Make of stack : MS
Diameter of stack(m) : 0.15 M
Height of stack(m) : 30 M
Instrument calibration status : Calibrated
Meteorological Condition : Clear Sky
Ambient Temperature - Ta (°C) : 22
Temperature of Stack Gases - Ts (°C) : 124
Velocity of Stack Gases (m/sec.) : 9.31
Flow rate of PM (LPM) : 30
Flow rate of Gas (LPM) : 2.0
Sampling condition : OK
Protocol used : IS 11255 & USEPA
Coordinates : 73°43'41" & 26°38'31"

S.No	Parameters	Test Method	Results	Units	Limits
1	Carbon Monoxide (CO)	USEPA 10: 1996	1.13	gm/kw-hr	3.5
2	Particulate Matter (PM)	IS: 11255 (P-1): 1985, RA 2019	0.011	gm/kw-hr	0.02
3	Oxide of Nitrogen (NOX)	IS 11255 (P-7) 2005; RA 2022	0.24	gm/kw-hr	0.40
4	Total Hydrocarbon (HC)	USEPA 18: 1996	0.10	gm/kw-hr	0.19
5	Sulphur Dioxide (SO2)	IS: 11255(P-2): 1985, RA 2019	2.01	gm/kw-hr	Not Specified

*BLQ= Below Limit Of Quantification, **LOQ= Limit Of Quantification

End of Report



Checked by



RK Yadav
Lab Incharge
Authorized Signatory



Page No. 1/1

Term & conditions P10

Approved & Certified EPA 1986 Recognised, ISO:9001 and OHSAS:45001 Certified

Vibrant Techno Lab Pvt. Ltd.

SC-40, 3rd Floor, Narayan Vihar S, Ajmer Road, Jaipur Raj. 302020

9929108691, 9810205356, 8005707098, 9549956601

0141-2954638

bd@vibranttechnolab.com

www.vibranttechnolab.com

"Both Sides is Printed ---Save Paper, Save Environment"



TEST REPORT



Sample Number : VTLWW/01

M/S JK Cement Works
(Unit of JK Cement Ltd.) Vill. & PO. - Gotan Dist -
Nagaur, Rajasthan

Name & Address of the Party :

Sample Description : Waste Water

Sampling Location : STP Outlet (STP Treated Water) 300 KLD STP

Sample Collected By : VTL Team

Preservation : Suitable Preservation

Method of sampling : IS :3025

ULR No. : TC112272500000014F
Report No. : VTLWW/2412300001/A
Format No : 7.8 F-01
Party Reference No : NIL
Report Date : 04/01/2025
Period of Analysis : 30/12/2024-04/01/2025
Receipt Date : 30/12/2024
Sampling Date : 27/12/2024
Sampling Type : Grab
Sample Quantity : 2 Ltr.
Coordinates : 73°43'22" N & 26°38'28"E

S.No.	Test Parameters	Test Method	Result	Unit	Limits
1	pH	IS: 3025 (P-11): 2022	7.48	-	5.5 to 9.0
2	Total Suspended Solids (TSS)	IS: 3025 (P-17): 2022	17.0	mg/l	20
3	Temperature	IS: 3025 (P-9): 2023	2.6	°C	Shall not exceed 5°C above the receiving water temperature
4	Oil & Grease	IS:3025 (P-39): 2021	*BLQ(**LOQ-4.0)	mg/l	10
5	Ammonical Nitrogen (as NH ₃ -N)	IS : 3025 (P-34) Sec 1 :2023 (Clause 5.3)	3.43	mg/l	5.0
6	Total Kjeldahl Nitrogen (as NH ₃)	IS : 3025 (P-34) Sec 1 :2023 (Clause 8.0)	6.62		10
7	Biochemical Oxygen Demand (BOD) (3 days @ 27°C)	IS: 3025 (P-44): 2023	8.5	mg/l	10
8	Chemical oxygen Demand (COD)	IS : 3025 (P-58) : 2023	30.0	mg/l	50
9	Chloride (as Cl)	IS: 3025 (P-32): 1988, RA. 2019	652	mg/l	--
10	Sulphide (as S)	IS: 3025 (P-29) : 2022 (Clause 6.0)	*BLQ(**LOQ-0.1)	mg/l	2
11	Residual Free Chlorine	IS: 3025 (P-26): 2021 (Clause 5.0)	0.81	mg/l	1.0
12	Faecal coliform	APHA 24th Edition 9221 C ,2023	32	MPN/100 ml	<100

*BLQ: Below Limit Of Quantification, **LOQ: Limit Of Quantification

End of Report



Checked by



RK Yadav
Lab Incharge
Authorized Signatory



Term & condition PTO

Approved & Certified: EPA 1986 Recognised, ISO:9001 and OHSAS:45001 Certified

Page No. 1/1

Vibrant Techno Lab Pvt. Ltd.

SO-40, 3rd Floor, Narayan Vihar S, Ajmer Road, Jaipur Raj, 302020
9929108691, 9810205356, 8005707098, 9549956601

0141-2954638
bd@vibranttechnolab.com
www.vibranttechnolab.com

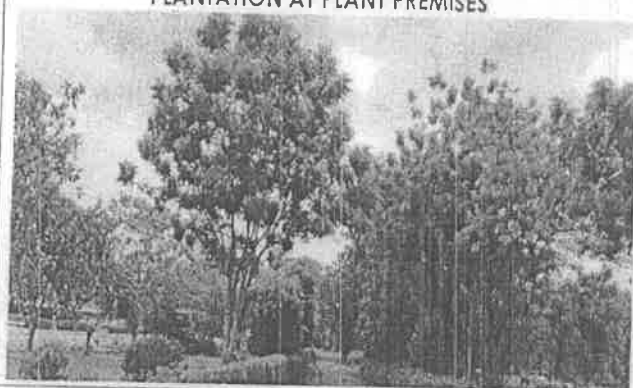
"Both Sides is Printed ---Save Paper, Save Environment"

Annexure-3

PLANTATION AT PLANT PREMISES



PLANTATION AT PLANT PREMISES



PLANTATION AT PLANT PREMISES



PLANTATION AT PLANT PREMISES



PLANTATION AT PLANT PREMISES



PLANTATION AT PLANT PREMISES



MIYAWAKI GREEN BELT DEVELOPMENT



MIYAWAKI GREEN BELT DEVELOPMENT



OFFICE COPY**REGD. A/D****JKCW/ENV/02/22****Date: 08.04.2025**

Member Secretary,
Rajasthan State Pollution Control Board,
4, Institutional Area, Jhalana Doongari,
Jaipur (Raj.) - 302 004

C- 036
(CPM)

Sub: Quarterly Compliance Report of Consent to Operate Conditions under Air & Water Act of M/s JK Cement Works, situated at P.O. Gotan, Distt. Nagaur, Rajasthan for the period from Jan-2025 to Mar-2025 (Quarter-4) of FY the 2024-25.

Ref:

1. F(CPM)/Nagaur(Merfa)/4(1)/2022-2023/2339-2341, Order No: 2022-2023/CPM/8613 dated 16/09/2022
2. F(CPM)/Nagaur(Merfa)/4(1)/2022-2023/2345-2347, Order No: 2022-2023/CPM/8614 dated 16/09/2022.

Dear Sir,

As above, subject matter, submitting herewith the point - wise compliance report of the conditions of consent to operate as per communicated board vides letter no. mentioned as reference. The following is the compliance status of CTO under Air & Water Act for the period from Jan-2025 to Mar-2025 (Quarter-4) of the FY 2024-25 is attached herewith.

We hope that you will find all the information in order.

Thanking you.

Yours faithfully,

For J. K. CEMENT WORKS,

Dr. Ranjeet Kumar Bagariya
(Environment Head)

Authorised Signatory

Copy To: Regional Officer (Regional Office),
Reg. A/d Rajasthan State Pollution Control Board
First Floor, Sehkar Bhoomi Vikas Bank Ltd., Nagaur- 341001

Encl: as above

Corporate Office

- Prism Tower, 5th Floor, Ninaniya Estate,
Gwal Bahari, Gurugram - 122102, Haryana
☎ +0124-6919800
✉ admin.prism@jkcement.com
🌐 www.jkcement.com

JK SUPER
CEMENT
BUILD SAFE

Manufacturing Units at:

Nimbahera, Mangrol, Gotan (Rajasthan) | Muddapur (Karnataka)
Charli (Haryana) | Kotri, Panna (M.P.) | Aligarh, Hamirpur (U.P.)
Balsamor (Gujarat) | Pujarrah

JKcement
WallMax
White Cement based Putty



Registered Office: 📍 Kamla Tower, Kanpur-205001, U.P., India. ☎ +91-512-2371478 to 85 ☎ +91-512-2399854 🌐 www.jkcement.com

Jodhpur Office: 📍 182, Gopi Krishna Vihar, Near Guru Ka Talab, Near Pratap Nagar, Jodhpur-342001. ☎ +0291-2432021, 2433072

M/S JK CEMENT WORKS, GOTAN
COMPLIANCE REPORT OF CONSENT TO OPERATE
FOR THE PERIOD: JAN-2025 to MAR-2025 (QUARTER-4) FY 2024-25

Compliance Conditions:

Sr.	Conditions	Compliance Status																							
1.	1. That this Consent to Operate is valid for period from 01/10/2022 to 30/09/2027 & 13/08/2022 to 31/07/2027.	Agreed.																							
2.	<div>That this Consent is granted for manufacturing/producing following products/by product or carrying out the following activities or operation/processes or providing following services with capacities given below:</div> <table><tr><th>Particular</th><th>Type</th><th>Quantity with Unit</th></tr><tr><td>Cement (Grey)</td><td>Product</td><td>508200.00 TPA</td></tr><tr><td>Clinker (Grey</td><td>Product</td><td>262500.00 TPA</td></tr><tr><td>or Cement (White)</td><td>Product</td><td>242659 .00 TPA</td></tr><tr><td>or Clinker (White)</td><td>Product</td><td>216660.00 TPA</td></tr></table>	Particular	Type	Quantity with Unit	Cement (Grey)	Product	508200.00 TPA	Clinker (Grey	Product	262500.00 TPA	or Cement (White)	Product	242659 .00 TPA	or Clinker (White)	Product	216660.00 TPA	Agreed.								
Particular	Type	Quantity with Unit																							
Cement (Grey)	Product	508200.00 TPA																							
Clinker (Grey	Product	262500.00 TPA																							
or Cement (White)	Product	242659 .00 TPA																							
or Clinker (White)	Product	216660.00 TPA																							
3.	That this consent to operate is for existing plant process & capacity and separate consent to establish/ operate is required to be taken for any addition/ modification/alteration in process or change in capacity or change in fuel.	We are communicating our agreement for obtaining fresh Consent to Establish & Operate for further change / alteration / modification / expansion if any.																							
4.	<div>That the quantity of effluent generation along with mode of disposal for the treated effluent shall be as under:</div> <table><tr><th>Type of effluent</th><th>Max. effluent generation (KLD)</th><th>Recycled Qty of effluent (KLD)</th><th>Disposed Qty. of effluent (KLD) and mode of disposal</th></tr><tr><td>Domestic Sewage</td><td>7.2</td><td>Nil</td><td>7.2 To be treated in STP and to be used in plantation and horticulture</td></tr></table>	Type of effluent	Max. effluent generation (KLD)	Recycled Qty of effluent (KLD)	Disposed Qty. of effluent (KLD) and mode of disposal	Domestic Sewage	7.2	Nil	7.2 To be treated in STP and to be used in plantation and horticulture	<div>There is no industrial waste water generated from process. Domestic waste water generated from the plant office toilets, canteen, guesthouse and colony etc. is being disposed off through STP (capacity 300 KLD) and treated water is used in plantation activity. Details of STP Treated water of plant and colony is given below:</div> <table><tr><th colspan="3">STP Treated water details Quarter 4</th></tr><tr><th>Month</th><th>Total Treated water (KL)</th><th>Daily (KL)</th></tr><tr><td>Jan 25</td><td>1485</td><td>47.9</td></tr><tr><td>Feb 25</td><td>1210</td><td>43.2</td></tr><tr><td>Mar 25</td><td>1019</td><td>32.9</td></tr></table>	STP Treated water details Quarter 4			Month	Total Treated water (KL)	Daily (KL)	Jan 25	1485	47.9	Feb 25	1210	43.2	Mar 25	1019	32.9
Type of effluent	Max. effluent generation (KLD)	Recycled Qty of effluent (KLD)	Disposed Qty. of effluent (KLD) and mode of disposal																						
Domestic Sewage	7.2	Nil	7.2 To be treated in STP and to be used in plantation and horticulture																						
STP Treated water details Quarter 4																									
Month	Total Treated water (KL)	Daily (KL)																							
Jan 25	1485	47.9																							
Feb 25	1210	43.2																							
Mar 25	1019	32.9																							



5.	That the sources of air emission along with pollution control measures and the emission standards for the prescribed parameters shall be under:				<p>Stacks are provided with Bag Filter/Bag House/ESPs along with safe and adequate infrastructure for monitoring. Monthly stack monitoring reports are being submitted to the board & Stack's OCEMS connected to your good office as well as CPCB servers.</p> <p>Total dioxins and furans, Others, parameters monitoring conducted by the approved laboratory. We are achieving all parameters in prescribed limit. Plant is under shutdown from 26.11.2024 onwards to till quarter end.</p>
Sources of air Emissions		Pollution Control Measures	Prescribed		
			Parameter	Standard	
One DG Set (350 KVA)	Acoustic enclosure, Safe Stack Height, as per ER IV		—	—	
Fiyash handling	Adequate Stack Height, Bag House	Particulate Matter		30mg/Nm3	
Limestone Crusher	Adequate Stack Height, Bag House	Particulate Matter		30mg/Nm3	
One Cement Mill	Adequate Stack Height, Bag House	Particulate Matter		30mg/Nm3	
One Cement Mill and Packing plant	Adequate Stack Height, Bag House	Particulate Matter		30mg/Nm3	
One Grate cooler	Adequate Stack Height, ESP	Particulate Matter		30mg/Nm3	
Petro Coke Mill	Adequate Stack Height, Bag House	Particulate Matter		30mg/Nm3	
Raw Mill/Kiln	Adequate Stack Height, ESP	Particulate Matter SO2 NOx HCL Total Orgnic Carbon, HF, Total dioxins and furans, Cd+Th+their compounds Hg and its compounds Sb+As+Pb+Co+Cr+Cu+Mn+Ni+V+ their compounds		30mg/Nm3 100mg/Nm 800mg/Nm3 10 mg/Nm3 10 mg/Nm3 1 mg/Nm3 0.1ngTEQ/Nm 3 0.05 mg/Nm3 0.05 mg/Nm3 0.5 mg/Nm3	



5.	<p>That the domestic sewage shall be treated before disposal so as to conform to the standards prescribed under the Environment (Protection) Act-1986 for disposal in to inland Surface Water. The main parameters for regular monitoring shall be as under.</p> <table><tr><th>Parameters</th><th>Standards</th></tr><tr><td>Total Suspended Solids</td><td>Not to exceed 100mg/l</td></tr><tr><td>pH Value</td><td>Between 5.5 to 9.0</td></tr><tr><td>Oil and grease</td><td>Not to exceed 10mg/l</td></tr><tr><td>Ammoniacal Nitrogen(as N)</td><td>Not to exceed 50mg/l</td></tr><tr><td>Biochemical Oxygen Demand (3day at 27°C)</td><td>Not to exceed 30mg/l</td></tr><tr><td>Chemical Oxygen Demand</td><td>Not to exceed 250mg/l</td></tr><tr><td>Total Residual Chlorine</td><td>Not to exceed 01mg/l</td></tr></table>	Parameters	Standards	Total Suspended Solids	Not to exceed 100mg/l	pH Value	Between 5.5 to 9.0	Oil and grease	Not to exceed 10mg/l	Ammoniacal Nitrogen(as N)	Not to exceed 50mg/l	Biochemical Oxygen Demand (3day at 27°C)	Not to exceed 30mg/l	Chemical Oxygen Demand	Not to exceed 250mg/l	Total Residual Chlorine	Not to exceed 01mg/l	<p>There is no industrial waste water generated from process. Domestic waste water generated from the plant office toilets, canteen, guesthouse and colony etc. is being disposed off through STP (capacity 300 KLD) and treated water is used in plantation activity. STP treated water monitoring are carried out on regular basis. The all parameters are achieving in prescribed limits. STP Quality report of treated water for the quarter is attached as annexure-2.</p>
Parameters	Standards																	
Total Suspended Solids	Not to exceed 100mg/l																	
pH Value	Between 5.5 to 9.0																	
Oil and grease	Not to exceed 10mg/l																	
Ammoniacal Nitrogen(as N)	Not to exceed 50mg/l																	
Biochemical Oxygen Demand (3day at 27°C)	Not to exceed 30mg/l																	
Chemical Oxygen Demand	Not to exceed 250mg/l																	
Total Residual Chlorine	Not to exceed 01mg/l																	
7.	<p>That the industry shall obtain all requisite permission from concerning authority and district administration Nagaur for operation of plant</p>	<p>Agreed , if any</p>																
8.	<p>That the industry shall not install any additional plant and machinery for production of cement 471900 TPA and Clinker 262500 TPA capacity only.</p> <p>Expansion CTO:</p> <p>5. That this consent to operate is valid for the production of grey cement upto 38,300 TPA, white cement- 2,42,659 TPA and white clinker-2,16,660 TPA only in Line-</p>	<p>Agreed.</p>																
9.	<p>a. That this consent is being issued for the production of cement 471900 TPA and Clinker 262500 TPA capacity only. For any changes in quantity and number of product & by product the industry has to seek fresh consent to Establish/Operate.</p> <p>Expansion CTO:</p> <p>6. That the production of either grey clinker (2,62,500 TPA) or white clinker (2,16,660 TPA) shall be allowed at a time with convertible facility in both Line-I & (proposed). Total white & grey clinker production will remain same as per existing EC. Total white clinker production in both the lines will not exceed 4,95,000 TPA.</p> <p>7. That the expansion in grey cement production shall be by debottlenecking/internal modification and product mix change of Line-I. Production of either grey cement (5,08,200 TPA) or white cement (2,42,659 TPA) shall be taken at a time with convertible facility in both the lines. Production of white cement from Line-I shall be by changing raw mix & keeping white cement capacity same for both Line-I & (proposed) as granted in environmental clearance letter dated 06.12.2021 i.e. 5,54,400 TPA.</p>	<p>We are agreed this condition.</p>																
10.	<p>That no fuel other than coal/petcoke and LDO shall be used as fuel in the kiln and quantity of petcoke used shall not exceed to 46200 tons per annum (4340 tons per month) without prior consent from the State Board.</p>	<p>Agreed.</p>																
11.	<p>That this consent to operate is being issued considering capital investment of Rs.168.27 crores. In case project cost exceeds 168.27 crores the industry shall obtain modification in consent to operate after paying fee as applicable.</p> <p>Expansion CTO:</p> <p>That the industry shall not install any additional plant & machinery and total investment under this consent to operate shall not exceed Rs. 70 Lac. Moreover, no additional water requirement shall be made.</p> <p>The guidelines on co- processing in cement/ power industries issued by central pollution Control Board shall be complied, if applicable.</p>	<p>We are agreed this condition.</p>																



12.	That no hazardous waste/non-hazardous waste shall be used/co-processed in cement kiln without obtaining prior permission from CPCB & RPCB as per the provisions of Hazardous and Other Waste (Management & Trans boundary) Rules, 2016 and consent to establish/ operate from the state Board, if applicable. That the control of fugitive emission guidelines/ code of practice as issued by CPCB will be followed.	Agreed.
13.	That all the recommendations made in the Charter of Corporate Responsibility for Environment Protection specified for Cement Plants shall be implemented. Exp. CTO- That the industry shall comply with the revised emission standards as notified by the MoEF & CC, Government of India, New Delhi for cement plants vide gazette notification dated 25/08/2014 (without Co- Processing of Waste) subsequently amended on 9/05/2016 and notified vide notification dated 10/05/2016 (with co processing of waste), whichever is applicable.	We have been complying with the recommended conditions of Corporate Responsibility for Environment Protection, as applicable. We are complying.
14.	The guidelines on co- processing in cement/ power industries issued by central pollution Control Board shall be complied, if applicable. (& 11 in Ex CTO). That The industry shall comply with all the directions issued by MOEF & CC, Gol & CPCB for Compliance of revised emission norms.	We are complying. We are complying as per the applicable directions by MoEF & CC, Gol & CPCB.
15.	That the industry shall maintain online continuous monitoring system at the main stacks (Attached to kiln, coal Mill, cement mill and clinker cooler etc.) to monitor the emission level of particulate matter (PM), SO ₂ and NO _x and connectivity of the same shall be ensured with RSPCB/CPCB server during operation of the plant. The industry shall comply with all the conditions of Environmental Clearance issued vide MoEF & CC letter no. -A-J-11011/63/2008-1 All(I) dated 27.05.2022	We have maintained Continuous Monitoring systems (CEMS) at all the main stacks and data are connected with the RSPCB & CPCB servers. We are complying this condition.
16.	That the industry shall comply with revised emission standards as notified by the MoEF & CC, Gol New Delhi for cement plants vide gazette notification dated 25/08/2014(without co-processing of waste) subsequently amended on 9/05/2016 and notified vide notification dated 10/05/2016(with co-processing of waste), whichever is applicable. That industry shall submit yearly Environmental Audit Statement on or before September of every year.	We are achieving the standards prescribed vide MoEF notification dated 25/08/2014 (without co-processing of waste) subsequently amended on 9/05/2016 and notified vide notification dated 10/05/2016 (With co- processing of Waste) and the data is connected to the RSPCB & CPCB servers. We are complying this condition.
17.	That the industry shall comply with all the directions issued by the MoEF & CC, Gol & CPCB for compliance of revised emission norms. *That the Cement Plant will comply with the standards as prescribed vide MoEF notification no. Gsr 826(E) dated 16 th November, 2009 with respect to National Ambient Air Quality Standards. [17].	Agreed, we are following all the directions issued by the MoEF&CC, Gol& CPCB for compliance of revised emission norms. *We are achieving the standards prescribed vide MoEF notification no. Gsr 826(E) dated 16 th November, 2009 with respect to National Ambient Air Quality Standards. The board w. r. t. particulate matter in stack emission and PM ₁₀ , PM _{2.5} , SO ₂ , NO _x , CO in ambient air. The monitoring results are being submitted to the Board on monthly basis. Four number of CAAQMS stations are connected to your good office as well as CPCB servers. Ambient Air Quality monitoring report is enclosed as Annexure-1.



18.	That the industry shall maintain stack of adequate height and adequate air pollution control measures at all the sources of air emissions so as to achieve the prescribed emission standards.	Adequate height of stack is maintained as per the standards. Adequate Pollution control measures like Bag Filter/Bag House/ESPs are provided at the Emission sources.
19.	That adequate infrastructure facility for stack emission monitoring shall be maintained at all the stack viz, limestone crusher, packer, Kiln, cooler, cement mills and coal mill etc.	All the stacks like limestone crusher, packer, Kiln, cooler, cement mills and coal mill etc. are provided with safe and adequate infrastructure for stack emission monitoring.
20.	That no additional source of air emission shall be installed without prior consent from the State Board.	Agreed.
21.	That closed conveyor belts shall be used for the transfer of material to minimize the fugitive emissions.	All material transfer points are covered for fugitive emissions control.
22.	That the industry shall maintain dust collection and extraction system to control fugitive dust emissions at all the transfer points and loading/ unloading areas.	Adequate measures are provided at the loading/ unloading areas.
23.	That all the raw materials and products shall be stored in closed covered shed.	All the raw grinded materials are stored in the closed covered shed.
24.	That cemented roads shall be provided & maintained in good condition inside the premises to minimize the fugitive emissions due to vehicular movements.	All roads are made of cement concrete to reduce the fugitive emission.
25.	That water sprinkling and cleaning of roads by vacuum cleaner shall be done regularly to control the fugitive emissions generated due to vehicular movements.	Road sweeping machines and vacuum cleaner are deployed for road and spillage cleaning.
26.	That the power supply to the production/ process shall be interlocked with the pollution control equipment's that in the event of non- functioning of the pollution equipment/ of increase in levels of pollutants, the production process stops automatically.	Power supply to the production/ process are interlocked with the pollution control equipment's & in case of non- functioning of the pollution equipment/ of increase in levels of pollutants, the production process stops automatically.
27.	That separate energy meter & hour meter shall be provided and maintained at all the air pollution control measures & ETP/STP and daily record of running hours of pollution control measures and energy consumption shall be maintained in logbook.	Separate energy meter & hour meter are installed and log book is maintained.
28.	The industry shall comply with the MoEF, Government of India, Notification dated 14 th September 1999, amended up to date relating to fly ash management and shall provide relevant details to the state board, MoEF, and Government of India.	We are comply with.
29.	That industry shall maintain continuous ambient air quality monitoring stations in all directions for monitoring of gaseous emissions and particulate matter in the ambient air and records of the same shall be submitted on quarterly basis to the state board.	We have installed the manual monitoring stations in all directions of plant and one continuous ambient air Quality monitoring station in one direction. The continuous ambient air quality monitoring station (CAAQMS) is also connected to your good office as well as central Pollution control board server. Manual monitoring data of all the four ambient air quality monitoring stations are sent to your good office with Monthly and quarterly compliance reports, while the CAAQMS LIVE data are recorded on your server. Analyzed Reports from approved lab are enclosed as Annexure-2

"Both Sides is Printed ---Save Paper, Save Environment"



30.	That the total <u>fresh</u> water consumption in the cement plant shall not exceed 1096.00 KLD (For process use- 850KLD, Cooling use-115 KLD, Domestic use-9.0KLD and green belt development and horticulture-122KLD) which shall be met from ground water.	Agreed. We are comply with.												
31.	That the water meter shall be installed and maintained at all the bore wells to measure the quantity of daily <u>ground</u> water withdrawal and record of the same shall be maintained on daily basis.	We have installed the water meters at site and record maintained on daily basis. Also telemetry system installed and connected with CGWA.												
32.	That the industry shall comply with the conditions imposed in NoC issued by the CGWA for abstraction of ground water vide NOC no CGWA/NOC/IND/REN/2/2021/6057 dated 30.07.2021 having capacity of ground water abstraction upto 1166.00 m3/day	Agreed. We are comply with. <table border="1"> <thead> <tr> <th>Month</th><th>Total water Wtd. (KL)</th><th>Daily (KL)</th></tr> </thead> <tbody> <tr> <td>Jan 25</td><td>2099</td><td>67.7</td></tr> <tr> <td>Feb 25</td><td>4380</td><td>156.42</td></tr> <tr> <td>Mar 25</td><td>5220</td><td>168.3</td></tr> </tbody> </table>	Month	Total water Wtd. (KL)	Daily (KL)	Jan 25	2099	67.7	Feb 25	4380	156.42	Mar 25	5220	168.3
Month	Total water Wtd. (KL)	Daily (KL)												
Jan 25	2099	67.7												
Feb 25	4380	156.42												
Mar 25	5220	168.3												
33.	That domestic waste water (7.2 KLD) generated from the plant premises shall be treated in existing Sewage Treatment Plant (STP) located within colony and shall be treated upto the standards as mentioned at condition no. 6 and shall be used for plantation/ horticulture purpose within the premises.	Agreed. We are comply with.												
34.	That no trade effluent and domestic waste water will be discharged inside or outside the factory premises in to a stream or well or sewer or on land.	No trade effluent is generated from the process. Factory office toilets & canteen domestic waste water is being treated through STP and treated water is used in plantation activity.												
35.	That suitable flow measuring devices/ meters at the inlet and outlet of sewage treatment plant shall be maintained. Daily record of domestic waste water generation and its treatment and utilization shall be maintained.	We have installed water meters at site and record maintained on daily basis.												
36.	That industry shall comply with the provisions of Hazardous & Others Waste (Management, & Transboundary Movement) Rules, 2016 and record of daily hazardous waste generation and its disposal shall be maintained.	Agreed. We are following provisions of Hazardous & Others Waste (Management, & Transboundary Movement) Rules, 2016 and records are maintained.												
37.	That the industry shall carryout effluent sampling/Stack Monitoring/ ambient air quality monitoring and submit quarterly analysis report from the state board laboratory/ laboratory recognized by Ministry of Environment & forests (MoE&F), Government of India.	Agreed. Stack Monitoring/ ambient air quality monitoring is carried out from the state board laboratory/ laboratory recognized by Ministry of Environment & forests (MoE&F), Government of India and is submitted periodically to your good office. Monitoring Results are given in Annexure-1												
38.	That Suitable measure for rain water harvesting for artificial recharge of ground water shall be taken.	We have constructed nine number of rain water harvesting for artificial recharge of ground water.												
39.	That the plantation in at least 33% of total area of the project in and around the cement plant shall be carried out & maintained.	We have maintained more than 33% of the plantation of total area at site. Photographs of the plantation are attached as annexure-3.												
40.	That the guidelines for pre-processing and co-processing of Hazardous and other waste in cement plants of July, 2017 issued by the Central Pollution Control Board shall be complied.	We are complying.												

"Both Sides Is Printed —Save Paper, Save Environment"



41.	That the industry shall procure pet coke from Board's registered producer or refineries and their Board's registered authorized dealers only or may import directly.	We are complying.
42.	That the industry may import the petcoke for its own use only and consignment shall be in the name of the industry. For import of petcoke the industry shall obtain registration from the State Board.	Agreed. We are complying.
43.	That the trading of pet coke by the industry is not permitted.	Agreed. We are complying.
44.	That the industry shall submit details of pet coke purchased from various sources during the month (imported, purchased from refineries or authorized dealers), quantity consumed during the month and opening and closing stock to the State Board on monthly basis.	We are complying.
45.	That the industry shall comply with all other directions as contained in the notification dated 19/01/2018 & 25/05/2018 related to sale and use of petcoke and "Guidelines for Regulation and Monitoring of Petcoke in India" dated 10/09/2018 issued by the MOEF&CC, New Delhi and any other directions issued by the MoEF&CC & State Pollution Control Board in this regard.	Agreed. We are complying.
46.	That this consent to operate shall be subject to compliance of direction or order passed by the Hon'ble NGT/Court of Law in the matter, if any.	Agreed.
47.	That no Single Use Plastic (SUP) item, which is CC).Government of India Environment, Forest and Climate Change (MOEF & notification dated 12.08.2021 shall be used in the industry/unit premises.	Agreed. We are complying this conditions in premises. The display boards are installed at site for awareness.
48.	That the industry shall also ensure the compliance of all the other conditions of consent order no. 2017-2018/CPM/5023 dated 19/12/2017 as amended vide letter dated 24.10.2018.	We are complying with conditions of vide Consent order the reports are being submitted to the Board on regular basis.
49.	That the industry shall submit the half yearly compliance report of all the above conditions to the State Board.	Agreed. We are comply with.
50.	That notwithstanding anything provided hereinabove, the Stat Board shall have power and reserves its right, as contained under section 27(2) of the Water Act and under Section 21(6) of the Air Act to review anyone or all the conditions imposed here in above and to make such variation as it deemed fit for the purpose of Air Act & Water Act.	Agreed.
51.	That the grant of this Consent to Operate is issued from the environmental angle only, and does not absolve the project proponent from the other statutory obligations prescribed under any other law or any other instrument in force. The sole and complete responsibility to comply with the conditions laid down in all other laws for the time- being in force, rests with the industry/unit/project proponent.	Agreed.
52.	That the grant of this consent to operate shall not, in any way, adversely affect or jeopardize the legal proceeding, if any instituted in the past or that could be instituted against you by the State Board for violation of the provisions of the provisions of the Act or the Rules made there under.	Agreed.
53.	That the Project Proponent shall comply with provisions of the E-waste (Management) Rules, 2016 and ensure that e-waste generated by then is channelized through collection centre or dealer of authorized producer or dismantler or recycler or through designated take back service provider of the producer to authorized dismantler or recycler.	Agreed.
54.	That the Project Proponent shall maintain record of e-waste generated by them in Form-2 and make such records available for scrutiny by the Board.	Agreed. We are complying this condition
55.	That the Project Proponent shall file annual returns in Form-3, to the Board on or before the 30th day of June following the financial year to which that return relates	Agreed. We are complying this condition



56.	That the transportation of e-waste shall be carried out as per the manifest system where by the transporter shall be required to carry a document (three copies) prepared by the sender, giving the details as per Form-6.	Not applicable. No any transportation of e-waste is carried out by industry.
57.	That the Project Proponent shall comply with provisions of the Batteries (Management and Handling) Rules, 2001 (as amended) and submit half yearly returns (as bulk consumer, importer, auctioneer, recycler as the case may be) to the State Board as provided under Rule 10(2) (i) of the Battery (Management and Handling) Rules, 2001 (as amended). In case the Project Proponent is not a bulk consumer even then the used batteries shall be returned to the authorized dealers or recyclers only.	Agreed. We are complying every half yearly returns.
58.	That the record of batteries purchased and sold/ returned to registered dealers and/ or authorized recyclers shall be maintained and made available to the officers of the Board during inspections.	Agreed. We are complying this condition

COMPLIANCE FOR GENERAL CONDITIONS RELATED TO BOTH AIR & WATER ACTS:

- 1) Adequate arrangement with safe infrastructure to monitor it, dust collectors, bag houses, Water sprinkle system/arrangements etc. have been provided & maintained to control the pollution generated during process/plant in operation.
- 2) Separate energy meters are provided in pollution control devices & log book are being maintained with all details.
- 3) D.G. Set only emergency power generation use.
- 4) Pollution control measures are having interlocking with production equipment, which is already in existing system.
- 5) We are monitoring the stack emissions/ambient air quality on regular basis and the monthly results & compliance of consent conditions are being submitted to the Board on monthly basis.
- 6) Industry is having the Authorization for disposal of Hazardous Waste under Hazardous Waste (Management & Handling) Rules, 1989. We are complying the conditions under Manufacture, Storage and Import of Hazardous Chemicals Rules, 1989 and Battery (Management & Handling) Rules, 2001 as applicable.
- 7) Not applicable.
- 8) We are complying with the recommended conditions of Corporate Responsibility for Environment Protection, as applicable.
- 9) We are submitting the Environment Statement Report by September every year.
- 10) We have already taken care for controlling the fugitive dust emission by adopting the better housekeeping, water sprinkler system, covered storage yard, conveyer belt and concreting the movement areas and Green Belt Development.
- 11) We are communicating our agreement to inform concern departments in prescribed time frame to comply with the stipulated condition.
- 12) We are communicating our agreement to obey guidelines of Air act & Water act.
- 13) We are communicating our agreement to follow all the provisions of said acts.
- 14) We are communicating our agreement for this condition and fulfill the other statutory requirements under any law/ rules/ notifications, as applicable.
- 15) We are communicating our agreement to apply renewal of consent to operate in the prescribed format in given time frame.
- 16) We are communicating our agreement for this condition. Fresh Consent to Establish & Operate will be obtained for further change / alteration / modification / expansion if any.
- 17) Compliance Reports of stipulated conditions are being submitted on monthly/quarterly/ half yearly/yearly basis to concern departments.
- 18) We shall cover more than 33% of total area in green belt. Tree sapling of Neem, Desi Ashok, Pendular Ashok, Arjun, Phycus ponda, Karer, Karanj, Duranta etc. has been planted in the plant area, colony area along with boundary side & nearby area.



COMPLIANCE FOR GENERAL CONDITIONS RELATED TO AIR ACT ONLY:

- 1) All stacks height is provided as per norms prescribed.
- 2) Safe and adequate infrastructure is installed for stack and ambient air quality monitoring on each station and regular monitoring has been conducted to insure compliance.
- 3) Not applicable
- 4) After the consultation and finalization from the board, we've installed the four CAAQM stations in the periphery of J K Cement Works industrial premises and monthly report is being sent to the board.
- 5) Pneumatic system has provided at loading, unloading, conveyer belts, storage yards etc. points for controlling the fugitive dust emission.
- 6) Acoustic enclosures are provided for DG Sets that's meeting prescribed norms.
- 7) Presently the DG Sets are not in operation (Only Emergency use) however confirming the emissions standards as prescribed.
- 8) Not applicable
- 9) We are monitoring the ambient noise level in the factory premises on monthly basis & results are well within the stipulated norms.

COMPLIANCE FOR GENERAL CONDITIONS RELATED TO WATER ACT ONLY:

- 1) Domestic waste water generated from the plant office toilets, canteen, guesthouse and colony etc. is being disposed off through STP (capacity 300 KLD) and treated water is used in plantation activity.
- 2) The entire treated water has been reused for water spraying for control of fugitive emission & green belt development. Well-designed sprinkle systems have been provided & maintained.
- 3) Not Applicable
- 4) Disposal of the domestic waste water generated from the plant office toilets, canteen, guesthouse and colony etc. is being disposed off through STP (capacity 300 KLD) and treated water is used in plantation activity.
- 5) Water meters installed at the source of water supply and maintained complete record.



STACK MONITORING REPORT

Annexure-1

MONTH: JAN 2025												
S. No	Stack mark	Stack attached to	Stack DIA (in mm)	Stack Height, From G.L. (mtrs.)	No. of Samples	Operating conditions	Temp. of Gases $^{\circ}$ C	Velocity (m/sec)	Volume of Gas in Stack (Nm ³ /Min)	PM (Mg/ Nm ³)	Raw Mill/ Kiln SO _x (mg/ Nm ³)	Raw Mill/ Kiln NO _x (mg/ Nm ³)
1	A	Limestone Crusher	700	30	1	All readings were taken under normal operating conditions	47	8.5	210.49	15.34	Plant Under Shutdown	Plant Under Shutdown
2	B	Raw Mill/Kiln	2600	80	1							
3	C	Grate Cooler	2200	30	1							
4	D	Cement Mill	900	30	1							
5	E	Cement Mill/ Packing	900	30	1							
6	F	Petro Coke Mill	850	31	1							
7	G	Ready Mix Mortar Plant	750	30	1							
8	H	Flyash Handling	588	32	1							
Plant Under Shutdown												

MONTH: FEB-2025												
S. No	Stack mark	Stack attached to	Stack DIA (in mm)	Stack Height From G.L. (mtrs.)	No. of Samples	Operating conditions	Temp. of Gases $^{\circ}$ C	Velocity (m/sec)	Volume of Gas in Stack (Nm3/ Min)	PM (Mg/ Nm3)	Raw Mill/ Kiln SOx (mg/ Nm3)	Raw Mill/ Kiln Nox (mg/ Nm3)
1	A	Limestone Crusher	700	30	1	All readings were taken under normal operating conditions	45	8.2	202.87	14.81	Plant Under Shutdown	Plant Under Shutdown
2	B	Raw Mill/Kiln	2600	80	1							
3	C	Grate Cooler	2200	30	1							
4	D	Cement Mill	900	30	1							
5	E	Cement Mill/ Packing	900	30	1							
6	F	Petro Coke Mill	850	31	1							
7	G	Ready Mix Mortar Plant	750	30	1							
8	H	Flyash Handling	588	32	1							
Plant Under Shutdown												



"Both Sides is Printed —Save Paper, Save Environment"

MONTH: MAR-2025												
S. No	Stack mark	Stack attached to	Stack DIA (in mm)	Stack Height, From G.L. (mtrs.)	No. of Samples	Operating conditions	Temp. of Gases (°C)	Velocity (m/sec)	Volume of Gas in Stack (Nm³/ Min)	PM (Mg/ Nm³)	Raw Mill/ Kiln SOx (mg/ Nm³)	Raw Mill/ Kiln NOx (mg/ Nm³)
1	A	Limestone Crusher	700	30	1	All readings were taken under normal operating conditions	Plant Under Shutdown	Plant Under Shutdown	Plant Under Shutdown	Plant Under Shutdown	Plant Under Shutdown	Plant Under Shutdown
2	B	Raw Mill/Kiln	2600	80	1							
3	C	Grate Cooler	2200	30	1							
4	D	Cement Mill	900	30	1							
5	E	Cement Mill/ Packing	900	30	1							
6	F	Petro Coke Mill	850	31	1							
7	G	Ready Mix Mortar Plant	750	30	1							
8	H	Flyash Handling	588	32	1							
							44	7.9	196.73	15.49	Plant Under Shutdown	

AMBIENT AIR QUALITY MONITORING REPORT							
MONTH: JAN-2025							
Sr.	DATE	LOCATION	PM10	PM2.5	SO2	NOx	CO
			µg/M3	µg/M3	µg/M3	µg/M3	µg/M3
1	01.01.2025	Front of Weigh Bridge	46.64	31.37	14.0	18.0	1339
2	30.01.2025	Front of Weigh Bridge	49.28	37.15	13.0	15.0	1327
3	01.01.2025	Front of Crusher MCC Room	45.76	31.05	15.0	18.0	1270
4	30.01.2025	Front of Crusher MCC Room	47.10	33.74	13.0	17.0	1282
5	01.01.2025	Bachelor Hostel	44.75	27.85	16.0	16.0	1316
6	30.01.2025	Bachelor Hostel	44.00	34.41	14.0	15.0	1304
7	01.01.2025	Front of Pump House	46.48	29.36	12.0	19.0	1293
8	30.01.2025	Front of Pump House	45.27	32.49	13.0	17.0	1362



AMBIENT AIR QUALITY MONITORING REPORT

MONTH: FEB-2025

Sr.	DATE	LOCATION	PM10	PM2.5	SO2	NOx	CO
			µg/m3	µg/m3	µg/m3	µg/m3	µg/m3
1	01.02.2025	Front of Weigh Bridge	44.83	32.80	14.0	18.0	1339
2	27.02.2025	Front of Weigh Bridge	48.61	35.50	13.0	15.0	1327
3	01.02.2025	Front of Crusher MCC Room	46.64	33.79	15.0	18.0	1270
4	27.02.2025	Front of Crusher MCC Room	44.70	36.79	13.0	17.0	1282
5	01.02.2025	Bachelor Hostel	44.20	34.09	16.0	16.0	1316
6	27.02.2025	Bachelor Hostel	42.03	32.07	14.0	15.0	1304
7	01.02.2025	Front of Pump House	45.29	31.33	12.0	19.0	1293
8	27.02.2025	Front of Pump House	43.54	29.39	13.0	17.0	1362

AMBIENT AIR QUALITY MONITORING REPORT

MONTH: MAR-2025

Sr.	DATE	LOCATION	PM10	PM2.5	SO2	NOx	CO
			µg/m3	µg/m3	µg/m3	µg/m3	µg/m3
1	01.03.2025	Front of Weigh Bridge	45.87	31.63	11.0	14.0	1270
2	31.03.2025	Front of Weigh Bridge	44.83	34.22	13.0	15.0	1293
3	01.03.2025	Front of Crusher MCC Rcom	41.67	32.37	12.0	17.0	1316
4	31.03.2025	Front of Crusher MCC Rcom	46.50	33.73	13.0	15.0	1282
5	01.03.2025	Bachelor Hostel	48.55	32.15	14.0	16.0	1304
6	31.03.2025	Bachelor Hostel	41.85	33.81	12.0	17.0	1316
7	01.03.2025	Front of Pump House	44.59	32.23	13.0	18.0	1327
8	31.03.2025	Front of Pump House	42.04	31.53	14.0	16.0	1316



"Both Sides is polluted - Save Ropes, Save Environment"



Sample Number:
Name & Address of the
Party

VTL/AA/01-04
M/s JK Cement Works
(Unit of JK Cement Ltd.) VIII. & Po.- Gotan,
Dist.- Nagaur, Rajasthan

Sample Description: Ambient Air Quality Monitoring

TEST REPORT



Report No.: VTL/A/2503270013-16/A
Format No.: 7.8 F 02
Party Reference No.: NIL
Report Date: 31/03/2025
Period of Analysis: 27 - 31/03/2025
Receipt Date: 27/03/2025

General Information:-

Sample collected by : VTL Team
Instrument Calibration Status : Calibrated
Meteorological condition during monitoring : Clear sky
Date of Sampling : 22/03/2025 to 23/03/2025
Ambient Temperature (°C) : Min. 18°C, Max. 38°C
Surrounding Activity : Human, Vehicular & Plant Activities
Scope of Monitoring : Regulatory Requirement
Sampling & Analysis Protocol : IS-5182 & CPCB Guidelines
Sampling Duration : 24 hrs.
Parameter Required : As Per Work Order

Sr.	Parameter	Protocol	Location & Lat Long				Unit	NAAC 3 2009
			Front of Pump house	Front of Weight Bridge	Front of Crusher HCC Room	Receptor Hostel		
			73°43'36"E 26°38'49"N	73°43'46"E 26°38'46"N	73°43'50"E 26°38'36"N	73°43'44"E 26°38'31"N		
1.	Particulate Matter (PM10)	IS: 5182 (P-23), 2006, RA 2022	66.84	72.12	70.69	64.58	µg/m³	100
2.	Particulate Matter (PM2.5)	IS 5182 (P-24)-2019	33.52	37.70	35.41	32.16	µg/m³	60
3.	Sulphur Dioxide (SO2)	IS: 5182 (P-2): Sec 1 2023	9.56	10.14	8.76	8.29	µg/m³	80
4.	Nitrogen Dioxide (NO2)	IS: 5182 (P-6), 2006 RA 2022	17.59	19.55	17.63	16.48	µg/m³	80
5.	Carbon Monoxide (as CO)	IS: 5182 (P-10)-1999, RA 2019 (NDIR)	0.66	0.72	0.69	0.64	mg/m³	4
6.	Benzene (as C6H6)	IS: 5182 (P-11)-2006, RA 2022	*BLQ(**LOQ1.0)	*BLQ(**LOQ1.0)	*BLQ(**LOQ1.0)	*BLQ(**LOQ1.0)	µg/m³	6
7.	Ammonia (as NH3)	IS 5182 (P-25)-2018	*BLQ(**LOQ10.0)	*BLQ(**LOQ10.0)	*BLQ(**LOQ10.0)	*BLQ(**LOQ10.0)	µg/m³	400
8.	Ozone (as O3)	IS: 5182 (P-9): 1974, RA 2019	15.42	18.34	16.84	13.29	µg/m³	180
9.	Lead (as Pb)	IS: 5182 (P-22)-2004, RA 2019	*BLQ(**LOQ0.02)	*BLQ(**LOQ0.02)	*BLQ(**LOQ0.02)	*BLQ(**LOQ0.02)	µg/m³	1
10.	Arsenic (as As)	VTL/STP/02/STP/09	*BLQ(**LOQ0.5)	*BLQ(**LOQ0.5)	*BLQ(**LOQ0.5)	*BLQ(**LOQ0.5)	µg/m³	6
11.	Nickel (as Ni)	IS 5182 (P-26)-2020	*BLQ(**LOQ5.0)	*BLQ(**LOQ5.0)	*BLQ(**LOQ5.0)	*BLQ(**LOQ5.0)	µg/m³	20
12.	Benzo (a) Pyrene	IS: 5182 (P-12): 2004, RA 2019	*BLQ(**LOQ0.2)	*BLQ(**LOQ0.2)	*BLQ(**LOQ0.2)	*BLQ(**LOQ0.2)	µg/m³	1

End of the Report

Checked By



RK Yadav
Lab Incharge
Authorized Signatory

Approved & Certified: EPA 1986 Recognised, ISO-9001 and OHSAS:45001 Certified

Vibrant Techno Lab Pvt. Ltd.

SC-40, 3rd Floor, Narayan Vihar 5, Ajmer Road, Jaipur Raj. 302020
9929108691, 9810205356, 8005707098, 9549956601

0141-2954638
bd@vibranttechnolab.com
www.vibranttechnolab.com

"Both Sides is Printed --- Save Paper, Save Environment"





TEST REPORT



Sample Number:
Name & Address of the Party:

VTL/AN/01-04
M/s JK Cement Works
(Unit of JK Cement Ltd.) Vill. & Po- Gotan,
Dist- Nagaur, Rajasthan

Sample Description:

Ambient Noise Level Monitoring

Scope of Monitoring

Regulatory Requirement

Protocol Used:

IS 9989

Instrument Used:

SLM

Report No.:

VTL/N/2503270013-16/A

Format No.:

7.8 F 04

Party Reference No.:

NIL

Report Date:

31/03/2025

Receipt Date:

27/03/2025

Sampling Duration

24 Hrs.

Sample Collected by

VTL Team

Instrument

Calibrated

Calibration Status

Ambient Noise Level Monitoring Results

General Information:-

Meteorological condition during monitoring

: Clear sky

Date of Monitoring

: 22/03/2025 to 23/03/2025

Time of Monitoring

: 06:00 AM to 06:00 AM

Ambient Temperature (°C)

: Min. 18°C, Max. 38°C

Surrounding Activity

: Human, Vehicular & Plant Activities

Parameter Required

: As per Work Order

Sr.	Test Parameter	Protocol	Location & Latitude							
			Front of Pump house		Front of Weight Bridge		Front of Crusher MCC Room		Bachelor Hostel	
			73°49'35"E 26°30'49"N		73°43'46"E 26°38'46"N		73°43'50"E 26°38'36"N		73°43'41"E 26°38'31"N	
1.	Noise Level L_{eq} dB(A)	IS:9989-1981, RA 2020	Day Time	Night Time	Day Time	Night Time	Day Time	Night Time	Day Time	Night Time
			63.2	47.8	61.9	42.5	59.3	42.1	58.6	40.0

Category of Zones	Leq in dB (A)	
	Day	Night
Industrial	75	70
Commercial	65	55
Residential	55	45
Silence Zone	50	40

1. Day Time is from 6:00 AM to 10:00 PM.
2. Night Time is reckoned between 10:00 PM to 6:00 AM.
3. Silence Zone is defined as an area up to 100 m around premises of Hospitals, Educational and Courts. Use of vehicle horn, Loudspeaker and bursting of crackers is banned in these zones.
Note: Mixed categories of areas be declared as one of the four above mentioned categories by the competent Authority and the corresponding standards shall apply.

-----End of the Report-----

Checked By



RK Yadav
Lab Incharge
Authorized Signatory

Approved & Certified: EPA 1986 Recognised, ISO-9001 and OHSA5:45001 Certified

Vibrant Techno Lab Pvt. Ltd.

5C-40, 3rd Floor, Narayan Vihar S, Ajmer Road, Jaipur Raj. 302020
9929108691, 9810205356, 8005707098, 9549956601

0141-2954638

bd@vibranttechnolab.com

www.vibranttechnolab.com

"Both Sides is Printed ---Save Paper, Save Environment"





TEST REPORT



VIBRANT

Sample Number : VTL/S/01

Name & Address of the Party : M/S JK Cement Works
(Unit of JK Cement Ltd.) Vill. & PO. - Gotan Dist. -
Nagaur, Rajasthan

Report No. : VTL/S/2503270001/A
Format No : 7.8 F-03
Party Reference No : NIL
Report Date : 31/03/2025
Period of Analysis : 27/03/2025-31/03/2025
Receipt Date : 27/03/2025

Sample Description : Stack Emission Monitoring

General Information:-

Sampling Location : DG Set 350 KVA
Sample Collected By : VTL Team
Date of Sampling : 23/03/2025
Sampling duration (Minutes) : 30 Min. (09:15 to 09:45 Hrs.)
Stack attached to : Acoustic Enclosure
Make of stack : MS
Diameter of stack(m) : 0.15 M
Height of stack(m) : 30 M
Instrument calibration status : Calibrated
Meteorological Condition : Clear Sky
Ambient Temperature - Ta (°C) : 23
Temperature of Stack Gases - Ts (°C) : 132
Velocity of Stack Gases (m/sec.) : 10.72
Flow rate of PM (LPM) : 34
Flow rate of Gas (LPM) : 2.0
Sampling condition : OK
Protocol used : IS 11255 & USEPA
Coordinates : 73°43'41" & 28°38'31"

S.No	Parameters	Test Method	Results	Units	Limits
1	Carbon Monoxide (CO)	USEPA 10: 1998	1.15	gm/hr-hr	3.5
2	Particulate Matter (PM)	IS: 11255 (P-1): 1985; RA 2019	0.013	gm/hr-hr	0.02
3	Oxide of Nitrogen (NOX)	IS 11255 (P-7) 2005; RA 2022	0.28	gm/hr-hr	0.40
4	Total Hydrocarbon (HC)	USEPA 16: 1998	0.14	gm/hr-hr	0.19
5	Sulphur Dioxide (SO2)	IS: 11255(P-2): 1985; RA 2019	2.21	gm/hr-hr	Not Specified

*BLQ= Below Limit Of Quantification, **LOQ= Limit Of Quantification

End of Report



Checked by



AK Yadav
Lab Incharge
Authorized Signatory



Page No. 1/1

Approved & Certified : EPA 1986 Recognised, ISO:9001 and OHSAS:45001 Certified

Vibrant Techno Lab Pvt. Ltd.

© SC-40, 3rd Floor, Narayan Vihar S, Ajmer Road, Jaipur Raj. 302020
9929103691, 9810205356, 8005707098, 9549954601

☎ 0141-2954638

✉ bd@vibranttechnolab.com

🌐 www.vibranttechnolab.com



"Both Sides is Printed ---Save Paper, Save Environment"



TEST REPORT



Sample Number : VTUS/02

Name & Address of the Party : M/S JK Cement Works
(Unit of JK Cement Ltd.) Vill. & PO. - Gotan Dist -
Nagaur, Rajasthan

Report No. : VTL/S/2503270002/A
Format No : 7.8 F-03
Party Reference No : NIL
Report Date : 31/03/2025
Period of Analysis : 27/03/2025-31/03/2025
Receipt Date : 27/03/2025

Sample Description : Stack Emission Monitoring

General Information:-
Sampling Location : Ready Mix Mortar
Sample Collected By : VTL Team
Date of Sampling : 23/03/2025
Sampling duration (Minutes) : 27 Min. (10:10 to 10:37 Hrs.)
Stack attached to : Bag House
Make of stack : MS
Diameter of stack(m) : 0.75 M
Height of stack(m) : 30 M
Instrument calibration status : Calibrated
Meteorological Condition : Clear Sky
Ambient Temperature - Ta (°C) : 24
Temperature of Stack Gases - Ts (°C) : 72
Velocity of Stack Gases (m/sec.) : 9.89
Flow rate of PM (LPM) : 37
Flow rate of Gas (LPM) : -
Sampling condition : OK
Protocol Used : IS 11255 & USEPA
Coordinates : -

S.No	Parameters	Test Method	Results	Units	Limits
1	Particulate Matter (PM)	IS: 11255 (Pt.1) : 1985, RA 2019	19.73	mg/Nm3	30

***Show Limit Of Quantification, **LOQ= Limit Of Quantification

End of Report



Checked by



RK Yadav
Lab Incharge
Authorized Signatory



Page No. 1/1

Approved & Certified EPA 1986 Recognised, ISO:9001 and OHSAS:45001 Certified

Vibrant Techno Lab Pvt. Ltd.

3C-43, 3rd Floor, Narayan Vihar S, Ajmer Road, Jaipur Raj, 302020
9827108691, 9810205356, 8005707098, 9549956601

0141-2954638

bd@vibranttechnolab.com

www.vibranttechnolab.com

"Both Sides is Printed ---Save Paper, Save Environment"





TEST REPORT



Sample Number: VTL/WW/01

M/S JK Cement Works
(Unit of JK Cement Ltd.) Vill. & PO. - Ocean Dast -
Nageaur, Rajasthan

Name & Address of the Party :

Sample Description : Waste Water
Sampling Location : STP Outlet (STP Treated Water) 300 KLD STP
Sample Collected By : VTL Team
Preservation : Suitable Preservation
Method of sampling : IS :3025

ULR No. : TC1122725000000404F
Report No. : VTL/WW/2503270001/A
Format No : 7.8 F-01
Party Reference No : NIL
Report Date : 31/03/2025
Period of Analysis : 27/03/2025-31/03/2025
Receipt Date : 27/03/2025
Sampling Date : 23/03/2025
Sampling Type : Grab
Sample Quantity : 2 Ltr.
Coordinates : 73°43'22" N & 26°38'28" E

S.No.	Test Parameters	Test Method	Result	Unit	Limits
1	pH	IS: 3026 (P-11): 2022	7.30	-	5.5 to 9.0
2	Total Suspended Solids (TSS)	IS: 3025 (P-17): 2022	19.70	mg/l	20
3	Temperature	IS: 3025 (P-8): 2023	3.4	°C	Shall not exceed 5°C above the receiving water temperature
4	Oil & Grease	IS:3025 (P-39): 2021	*BLQ(**LOQ-4.0)	mg/l	10
5	Ammonical Nitrogen (as NH ₃ -N)	IS : 3025 (P-34) Sec 1 2023 (Clause 5.3)	4.50	mg/l	5.0
6	Total Kjeldahl Nitrogen (as NH ₃)	IS : 3025 (P-34) Sec 1 2023 (Clause 5.0)	6.62		10
7	Biochemical Oxygen Demand (BOD) (5 days @ 27°C)	IS: 3025 (P-44): 2023	9.75	mg/l	10
8	Chemical Oxygen Demand (COD)	IS : 3025 (P-58) : 2023	40.60	mg/l	50
9	Chloride (as Cl)	IS: 3025 (P-32): 1988, RA. 2010	679.79	mg/l	-
10	Sulphate (as S)	IS: 3025 (P-29) : 2022 (Clause 5.0)	*BLQ(**LOQ-0.1)	mg/l	2
11	Residual Free Chlorine	IS: 3025 (P-26): 2021 (Clause 5.0)	0.72	mg/l	1.0
12	Faecal coliform	APHA 24th Edition 9221 C 2023	38	MPN/100 ml	<100

*BLQ-Below Limit Of Quantification, **LOQ- Limit Of Quantification

---End of Report---



Checked by



RK Yadav
Lab Incharge
Authorized Signatory



Page No. 01

Approved & Certified: EPA 1996 Recognised, ISO:9001 and OHSAS:45001 Certified

Vibrant Techno Lab Pvt. Ltd.

P. 50-40, 3rd Floor, Narayan Vihar S, Ajmer Road, Jaipur Raj. 302020
9929102011, 9810205356, 8005707098, 9549956401

☎ 0141-2954638

✉ bd@vibranttechnolab.com

🌐 www.vibranttechnolab.com

Annexure-3

"Both Sides Is Printed ---Save Paper, Save Environment"



M/s JK CEMENT WORKS, GOTAN
Water Withdrawal Data of FY 2024-25

Month	Bore Well	Bore	Bore Well No.	Bore Well	Total	Daily
Apr-24	4241	5077	195	0	9513	317.1
May-24	1559	9775	388	0	11722	378.1
Jun-24	1980	6770	939	0	9689	323
Jul-24	6430	315	1895	0	8640	278.7
Aug-24	7234	5020	4742	0	16996	548.3
Sep-24	7368	1596	6208	0	15172	505.7
Oct-24	7545	2	6800	2918	17265	556.9
Nov-24	4808	135	1275	2288	8506	283.5
Dec-24	433	561	94	1857	2945	95
Jan-25	147	149	131	1672	2099	67.71
Feb-25	373	243	1233	2530	4379	156.4
Mar-25	476	76	959	3709	5220	168.4
TOTAL	42594	29719	24859	14974	112140	



PLANTATION AT PLANT PREMISES



PLANTATION AT PLANT PREMISES



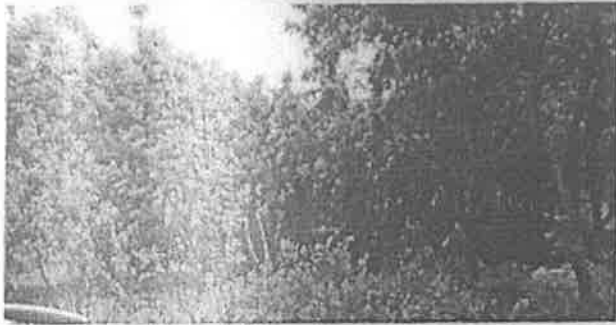
PLANTATION AT PLANT PREMISES



PLANTATION AT PLANT PREMISES



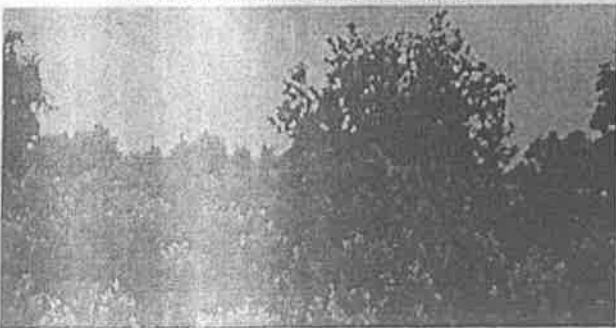
PLANTATION AT PLANT PREMISES



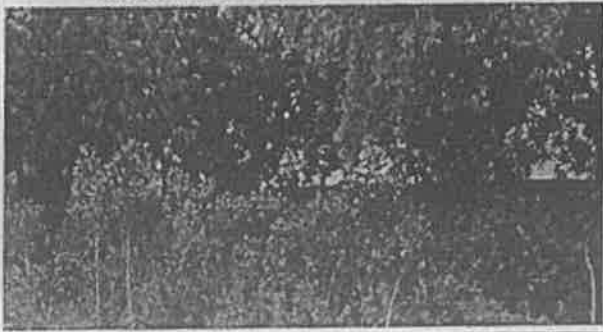
PLANTATION AT PLANT PREMISES



MIYAWAKI GREEN BELT DEVELOPMENT



MIYAWAKI GREEN BELT DEVELOPMENT



"Both Sides Is Printed —Save Paper, Save Environment"

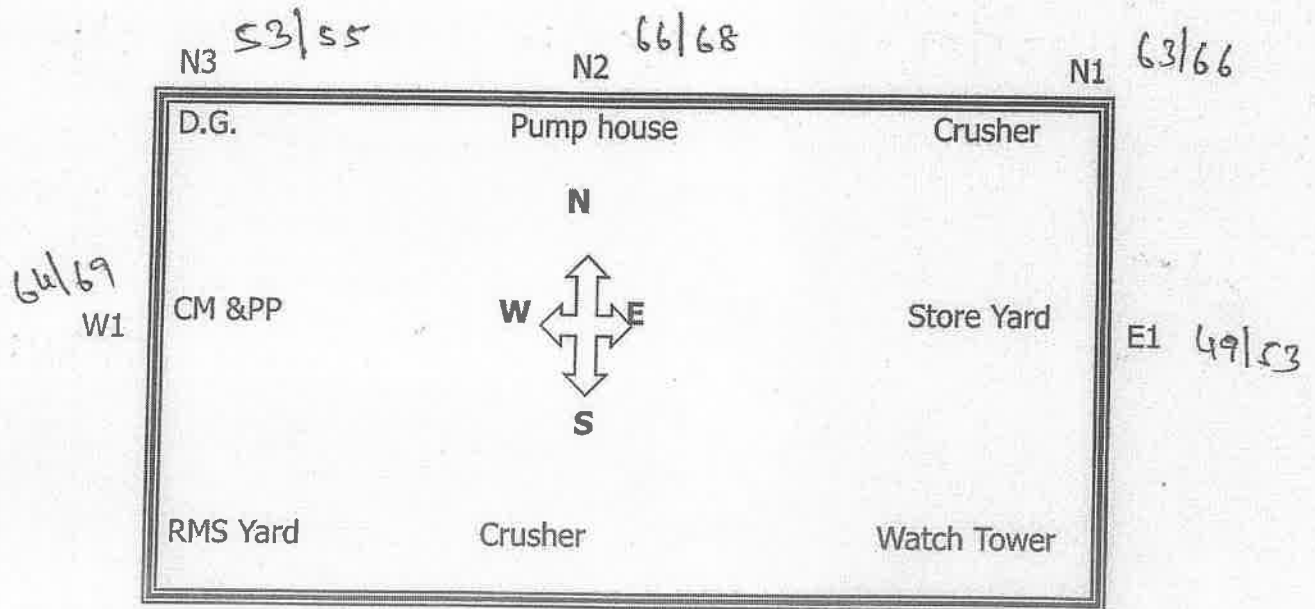


Ambient Noise Level Measurement Record (in dB (A))

Date: 18.03.2025

Time: 11.30am

Day/ Night: ☒ Day ☐ Night



CRUSHER	: OPERATING/ NOT OPERATING
RAW MILL	: OPERATING/ NOT OPERATING
KILN	: OPERATING/ NOT OPERATING
CEMENT MILL	: OPERATING/ NOT OPERATING
PACKING PLANT	: OPERATING/ NOT OPERATING
D. G.	: OPERATING/ NOT OPERATING
COMPRESSOR	: OPERATING/ NOT OPERATING
PET- COKE MILL	: OPERATING/ NOT OPERATING
Ready Mix Mortar	: OPERATING/ NOT OPERATING

Leg 61.36

REMARKS IF ANY:

MEASURED BY:

[Signature]

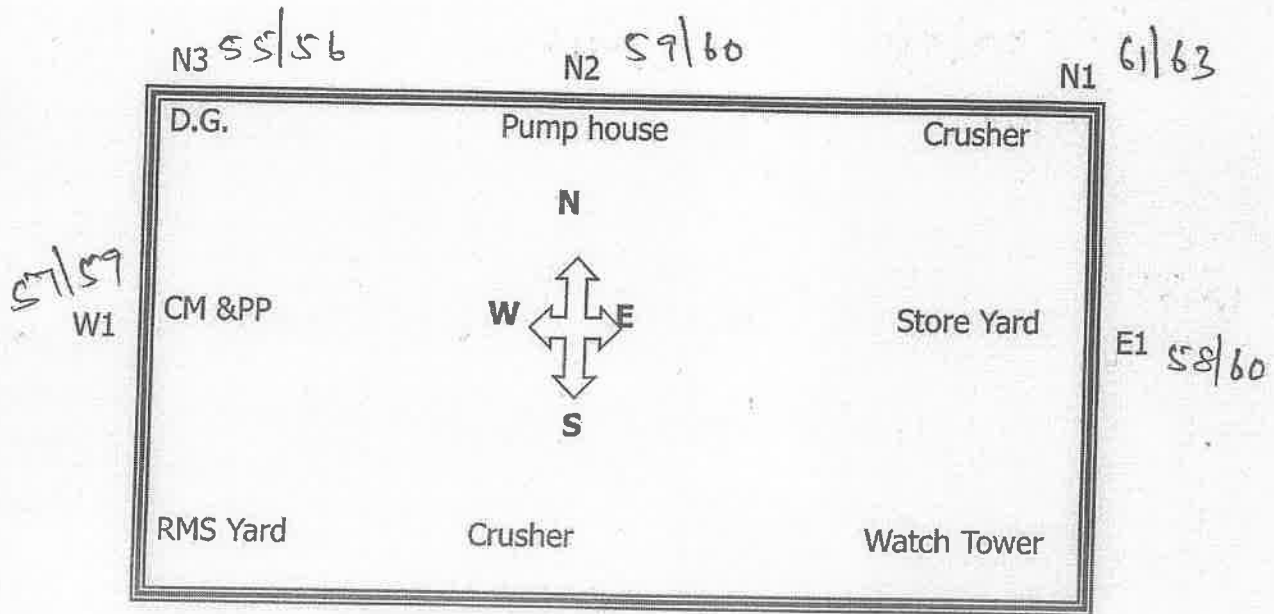


Ambient Noise Level Measurement Record (in dB (A))

Date: 18.03.2025

Time: 9.00

Day/ Night:



CRUSHER	: OPERATING/ NOT <u>OPERATING</u>
RAW MILL	: OPERATING/ NOT <u>OPERATING</u>
KILN	: OPERATING/ NOT <u>OPERATING</u>
CEMENT MILL	: OPERATING/ NOT <u>OPERATING</u>
PACKING PLANT	: OPERATING/ NOT <u>OPERATING</u>
D. G.	: OPERATING/ NOT <u>OPERATING</u>
COMPRESSOR	: OPERATING/ NOT <u>OPERATING</u>
PET- COKE MILL	: OPERATING/ NOT <u>OPERATING</u>
Ready Mix Mortar	: <u>OPERATING</u> / NOT OPERATING

REMARKS IF ANY:

MEASURED BY:

[Signature]

Leq 57.91

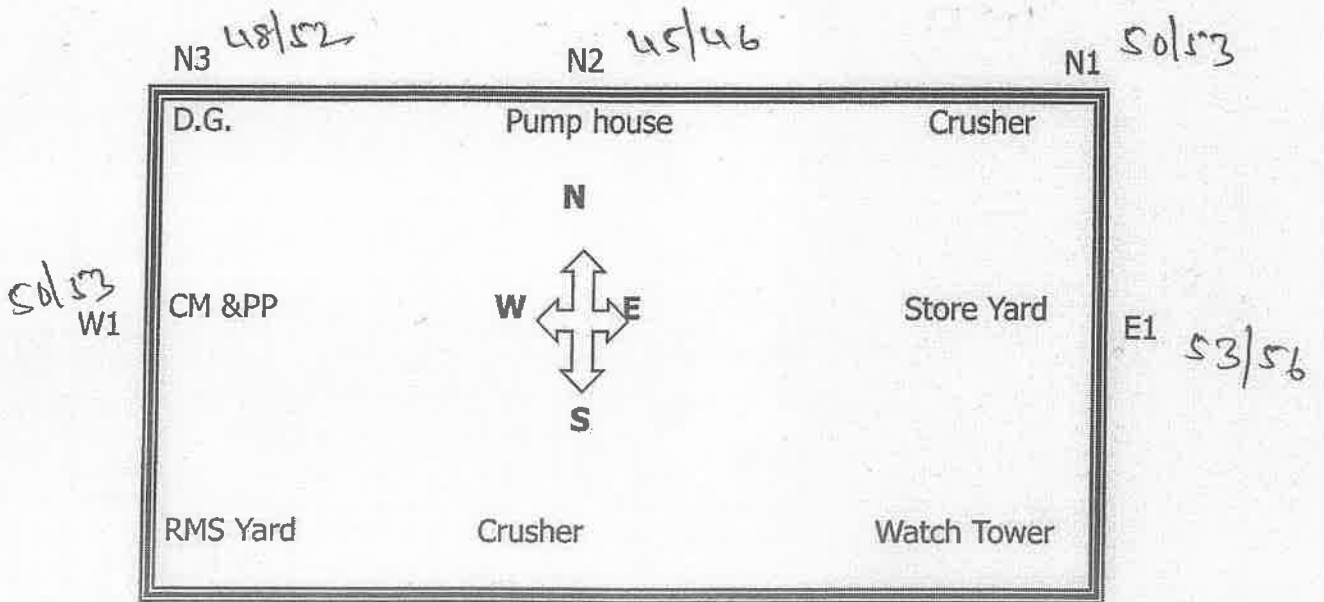


Ambient Noise Level Measurement Record (in dB (A))

Date: 25.02.2025

Time: 11.15 am

Day/ Night: ☒ Day ☐ Night



CRUSHER	: OPERATING/ NOT <input checked="" type="checkbox"/> OPERATING
RAW MILL	: OPERATING/ NOT <input checked="" type="checkbox"/> OPERATING
KILN	: OPERATING/ NOT <input checked="" type="checkbox"/> OPERATING
CEMENT MILL	: OPERATING/ NOT <input checked="" type="checkbox"/> OPERATING.
PACKING PLANT	: OPERATING/ NOT <input checked="" type="checkbox"/> OPERATING
D. G.	: OPERATING/ NOT <input checked="" type="checkbox"/> OPERATING
COMPRESSOR	: OPERATING/ NOT <input checked="" type="checkbox"/> OPERATING
PET- COKE MILL	: OPERATING/ NOT <input checked="" type="checkbox"/> OPERATING
Ready Mix Mortar	: OPERATING/ NOT OPERATING

REMARKS IF ANY:

MEASURED BY:

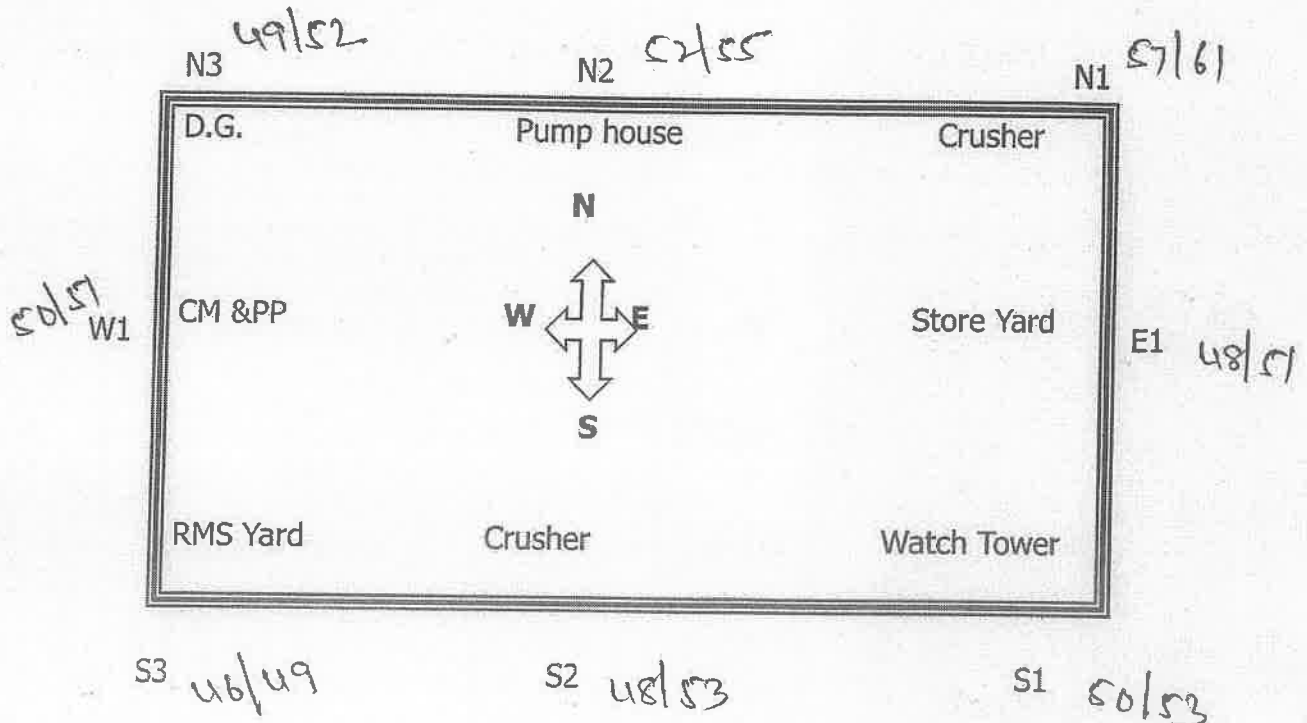
(Handwritten signature)



Leg 58.61

Ambient Noise Level Measurement Record (in dB (A))

Date: 25.02.2025 Time: 8.30 pm Day/ Night: ☒ Day ☐ Night



CRUSHER	: OPERATING/ NOT <input checked="" type="checkbox"/> OPERATING
RAW MILL	: OPERATING/ NOT <input checked="" type="checkbox"/> OPERATING
KILN	: OPERATING/ NOT <input checked="" type="checkbox"/> OPERATING
CEMENT MILL	: OPERATING/ NOT <input checked="" type="checkbox"/> OPERATING
PACKING PLANT	: OPERATING/ NOT <input checked="" type="checkbox"/> OPERATING
D. G.	: OPERATING/ NOT <input checked="" type="checkbox"/> OPERATING
COMPRESSOR	: OPERATING/ NOT <input checked="" type="checkbox"/> OPERATING
PET- COKE MILL	: OPERATING/ NOT <input checked="" type="checkbox"/> OPERATING
Ready Mix Mortar	: OPERATING/ NOT OPERATING

Leq - 59.80

REMARKS IF ANY:

MEASURED BY:

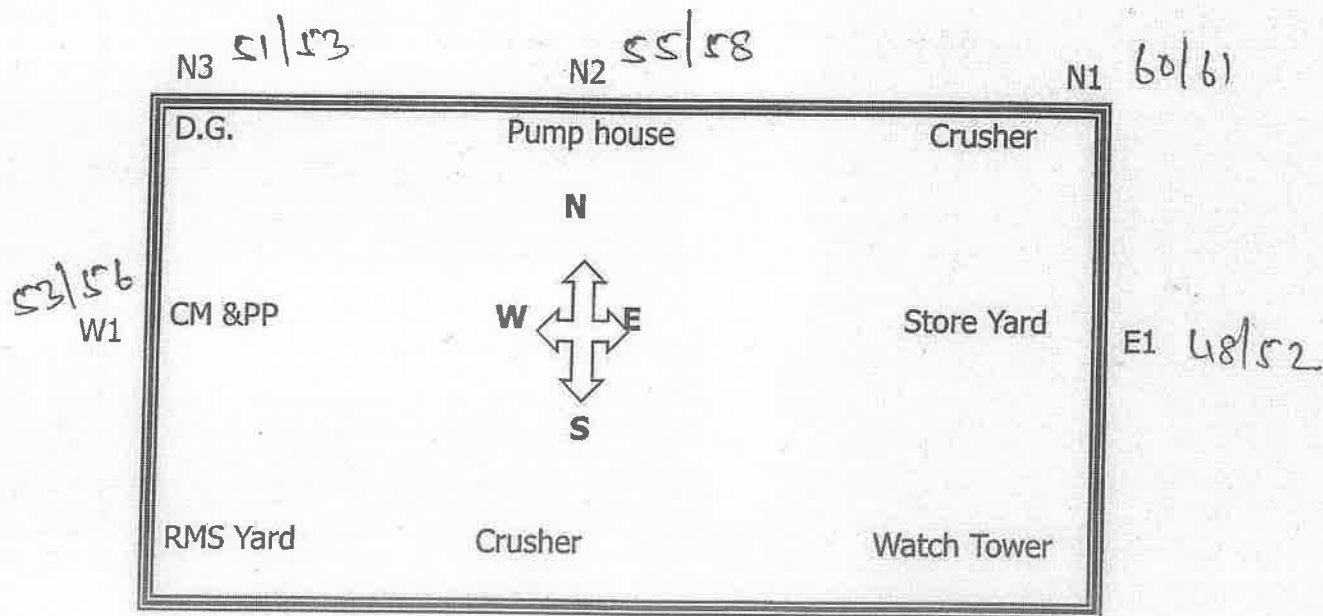


Ambient Noise Level Measurement Record (in dB (A))

Date: 28.01.2025

Time: 10.30 AM

Day/ Night: ☒ Day ☐ Night



CRUSHER	: OPERATING/ NOT OPERATING <input checked="" type="checkbox"/>
RAW MILL	: OPERATING/ NOT OPERATING <input checked="" type="checkbox"/>
KILN	: OPERATING/ NOT OPERATING <input checked="" type="checkbox"/>
CEMENT MILL	: OPERATING/ NOT OPERATING <input checked="" type="checkbox"/>
PACKING PLANT	: OPERATING/ NOT OPERATING <input checked="" type="checkbox"/>
D. G.	: OPERATING/ NOT OPERATING <input checked="" type="checkbox"/>
COMPRESSOR	: OPERATING/ NOT OPERATING <input checked="" type="checkbox"/>
PET- COKE MILL	: OPERATING/ NOT OPERATING <input checked="" type="checkbox"/>
Ready Mix Mortar	: OPERATING/ NOT OPERATING <input checked="" type="checkbox"/>

REMARKS IF ANY:

MEASURED BY:

[Signature]

Leg 60-50



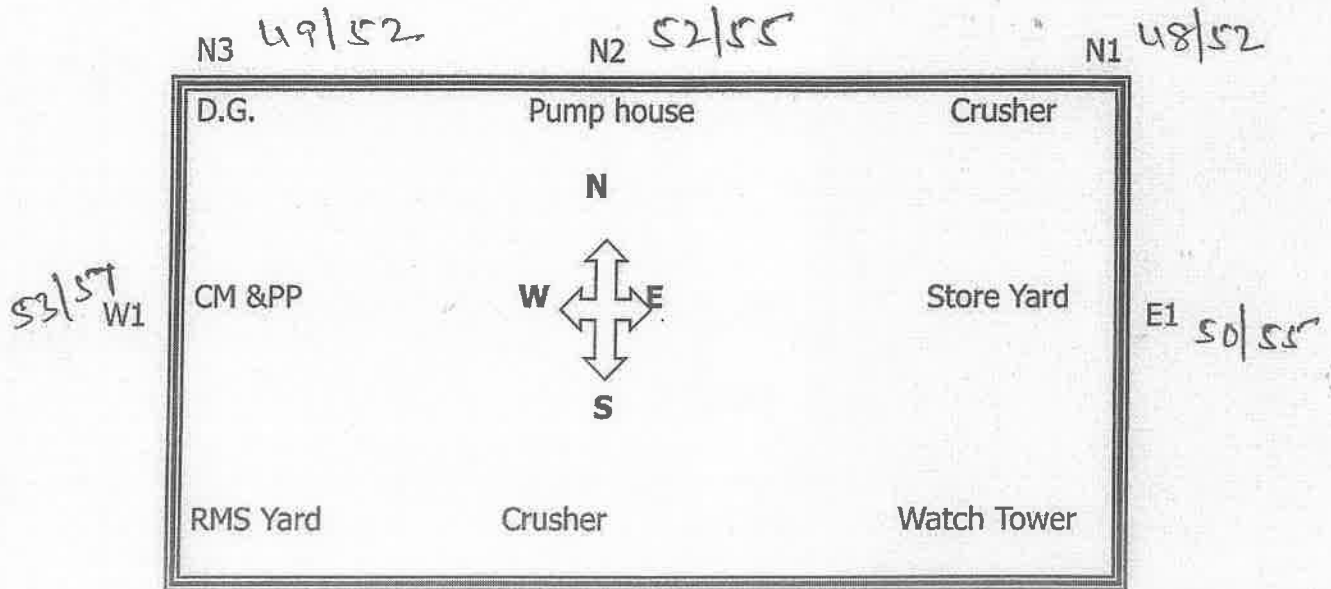
SIGNATURE:

Ambient Noise Level Measurement Record (in dB (A))

Date: 28.01.2025

Time: 9.00 pm

Day/ Night: ☒ Night



CRUSHER	: OPERATING/ NOT OPERATING
RAW MILL	: OPERATING/ NOT OPERATING
KILN	: OPERATING/ NOT OPERATING
CEMENT MILL	: OPERATING/ NOT OPERATING
PACKING PLANT	: OPERATING/ NOT OPERATING
D. G.	: OPERATING/ NOT OPERATING
COMPRESSOR	: OPERATING/ NOT OPERATING
PET- COKE MILL	: OPERATING/ NOT OPERATING
Ready Mix Mortar	: OPERATING/ NOT OPERATING

REMARKS IF ANY:

MEASURED BY:

Lee



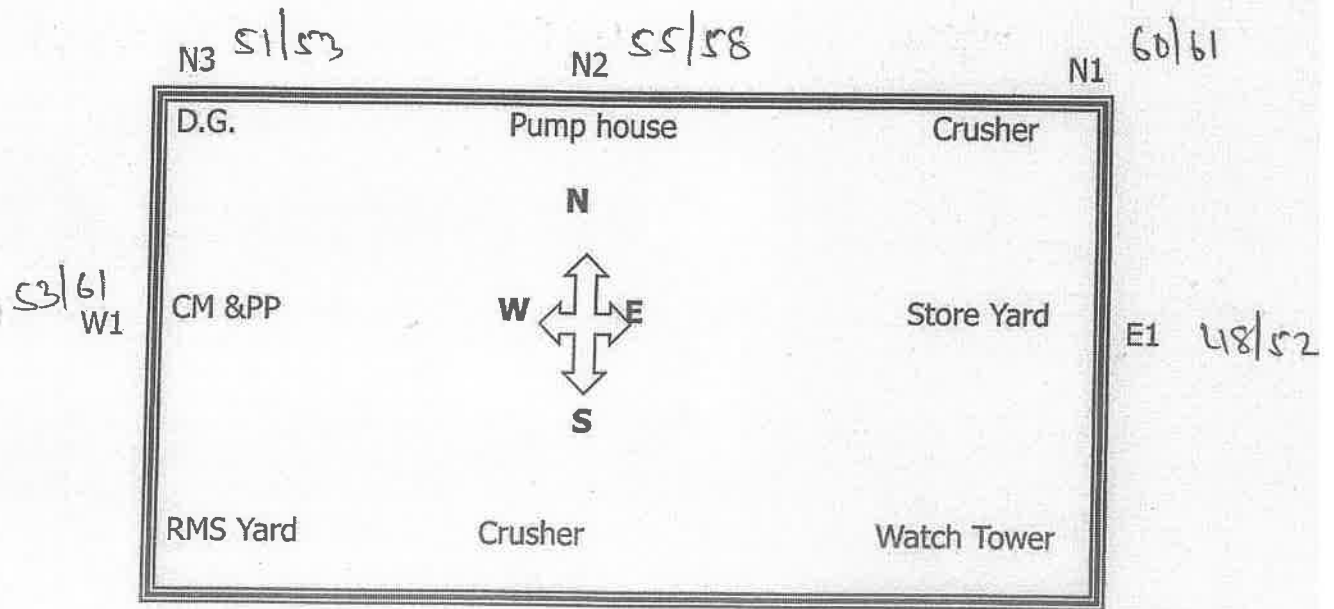
SIGNATURE:

Ambient Noise Level Measurement Record (in dB (A))

Date: 24.12.2024

Time: 10.30 AM

Day/ Night:



CRUSHER	: OPERATING/ NOT OPERATING
RAW MILL	: OPERATING/ NOT OPERATING
KILN	: OPERATING/ NOT OPERATING
CEMENT MILL	: OPERATING/ NOT OPERATING.
PACKING PLANT	: OPERATING/ NOT OPERATING
D. G.	: OPERATING/ NOT OPERATING
COMPRESSOR	: OPERATING/ NOT OPERATING
PET- COKE MILL	: OPERATING/ NOT OPERATING
Ready Mix Mortar	: OPERATING/ NOT OPERATING

REMARKS IF ANY:

MEASURED BY:

[Signature]

Leg. 54.82

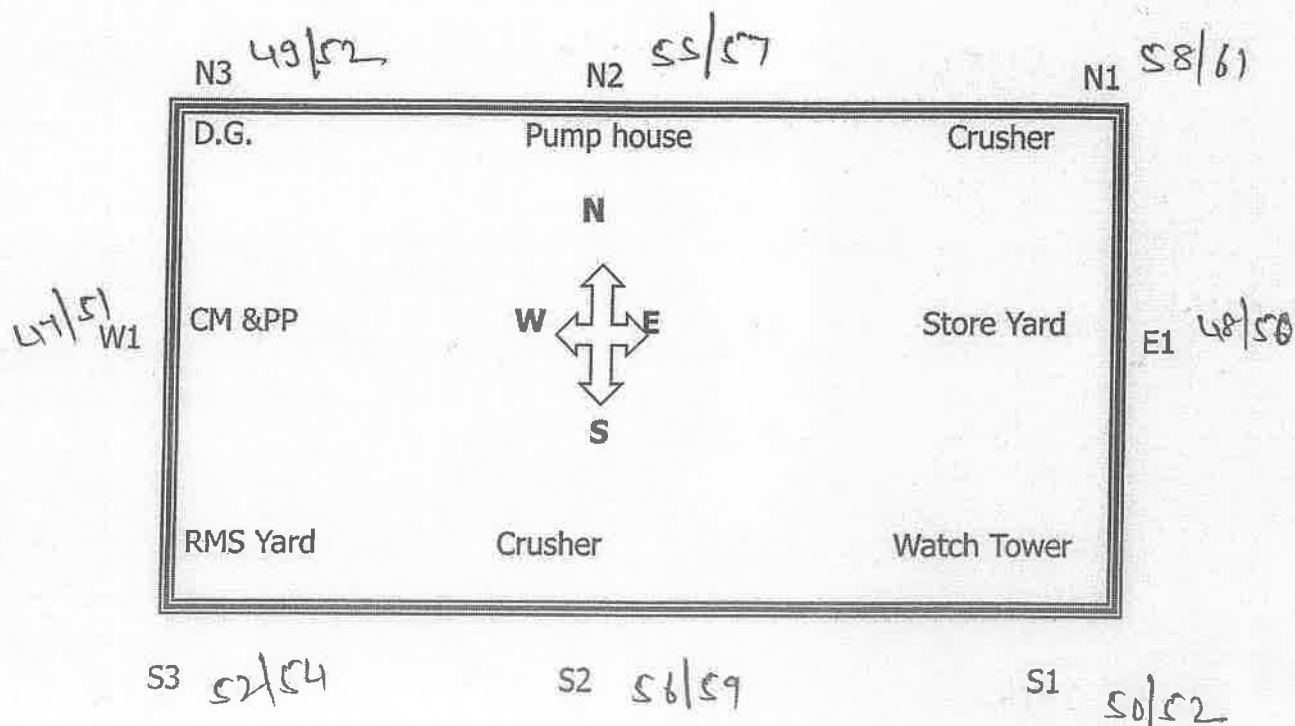


Ambient Noise Level Measurement Record (in dB (A))

Date: 24.12.2024

Time: 8.30 PM

Day/ Night: ☒ Night



CRUSHER	: OPERATING/ NOT OPERATING <input checked="" type="checkbox"/>
RAW MILL	: OPERATING/ NOT OPERATING <input checked="" type="checkbox"/>
KILN	: OPERATING/ NOT OPERATING <input checked="" type="checkbox"/>
CEMENT MILL	: OPERATING/ NOT OPERATING <input checked="" type="checkbox"/>
PACKING PLANT	: OPERATING/ NOT OPERATING <input checked="" type="checkbox"/>
D. G.	: OPERATING/ NOT OPERATING <input checked="" type="checkbox"/>
COMPRESSOR	: OPERATING/ NOT OPERATING <input checked="" type="checkbox"/>
PET- COKE MILL	: OPERATING/ NOT OPERATING <input checked="" type="checkbox"/>
Ready Mix Mortar	: OPERATING/ NOT OPERATING <input checked="" type="checkbox"/>

Leq - 52.60

REMARKS IF ANY:

MEASURED BY:

[Handwritten Signature]

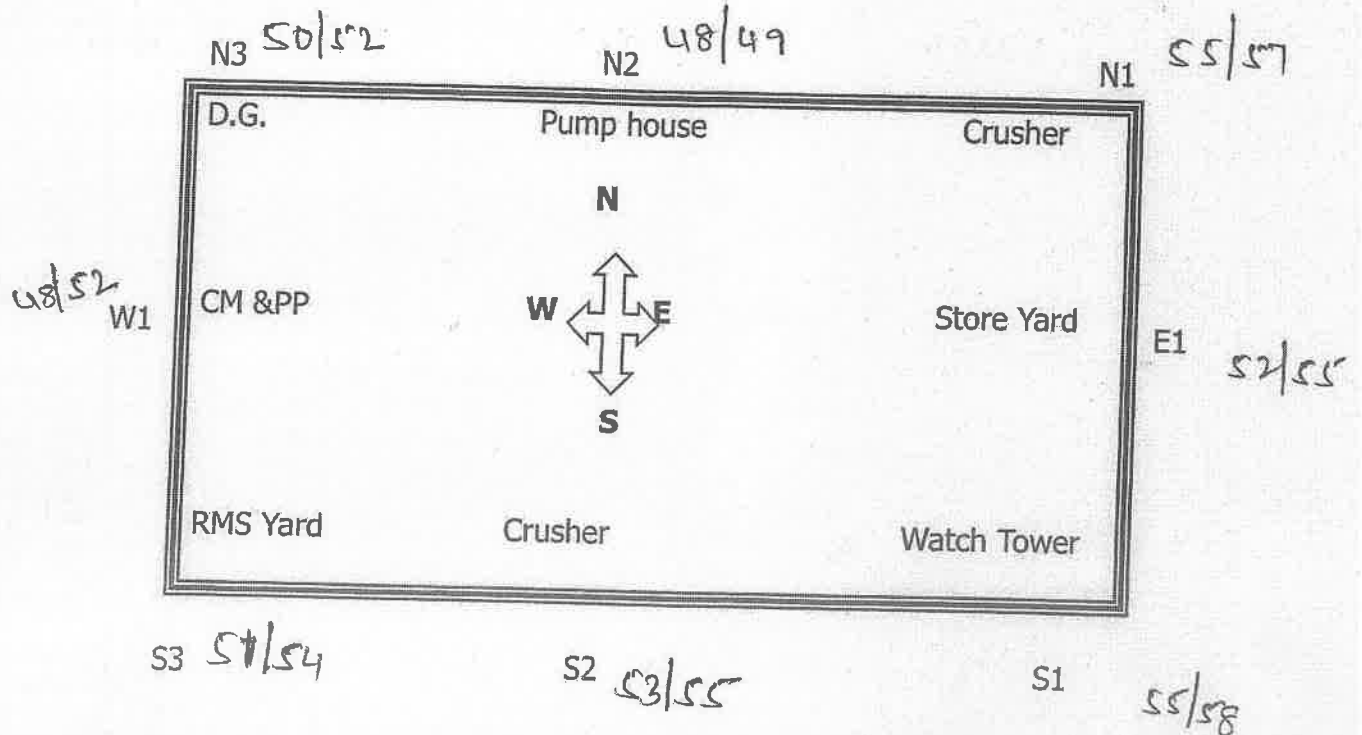


Ambient Noise Level Measurement Record (in dB (A))

Date: 26.11.2024

Time: 10.45 am

Day/ Night:



CRUSHER	: OPERATING/ NOT OPERATING
RAW MILL	: OPERATING/ NOT OPERATING
KILN	: OPERATING/ NOT OPERATING
CEMENT MILL	: OPERATING/ NOT OPERATING
PACKING PLANT	: OPERATING/ NOT OPERATING
D. G.	: OPERATING/ NOT OPERATING
COMPRESSOR	: OPERATING/ NOT OPERATING
PET- COKE MILL	: OPERATING/ NOT OPERATING
Ready Mix Mortar	: OPERATING/ NOT OPERATING

Leg 52.10

REMARKS IF ANY:

MEASURED BY:

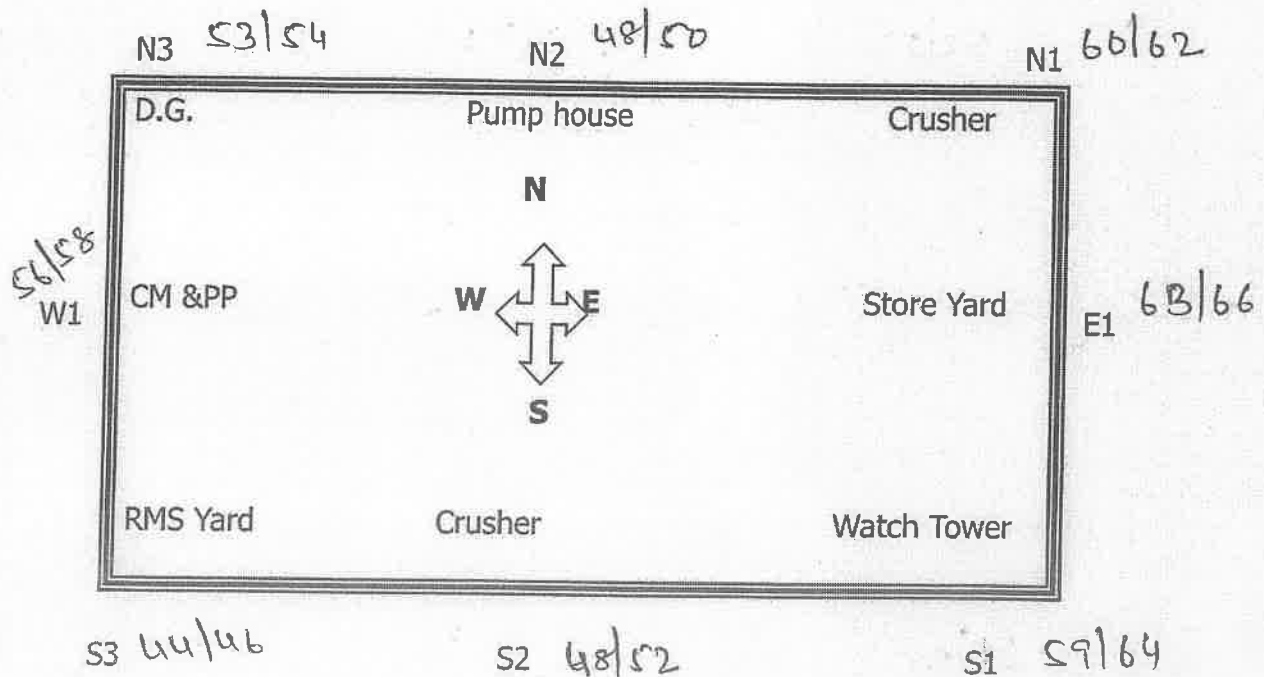


Ambient Noise Level Measurement Record (in dB (A))

Date: 26.11.2024

Time: 8.45 pm

Day/ Night: ☒ Day ☐ Night



CRUSHER	: OPERATING/ NOT OPERATING
RAW MILL	: OPERATING/ NOT OPERATING
KILN	: OPERATING/ NOT OPERATING
CEMENT MILL	: OPERATING/ NOT OPERATING
PACKING PLANT	: OPERATING/ NOT OPERATING
D. G.	: OPERATING/ NOT OPERATING
COMPRESSOR	: OPERATING/ NOT OPERATING
PET- COKE MILL	: OPERATING/ NOT OPERATING
Ready Mix Mortar	: OPERATING / NOT OPERATING

REMARKS IF ANY:

MEASURED BY:

[Signature]

Leg 54.44

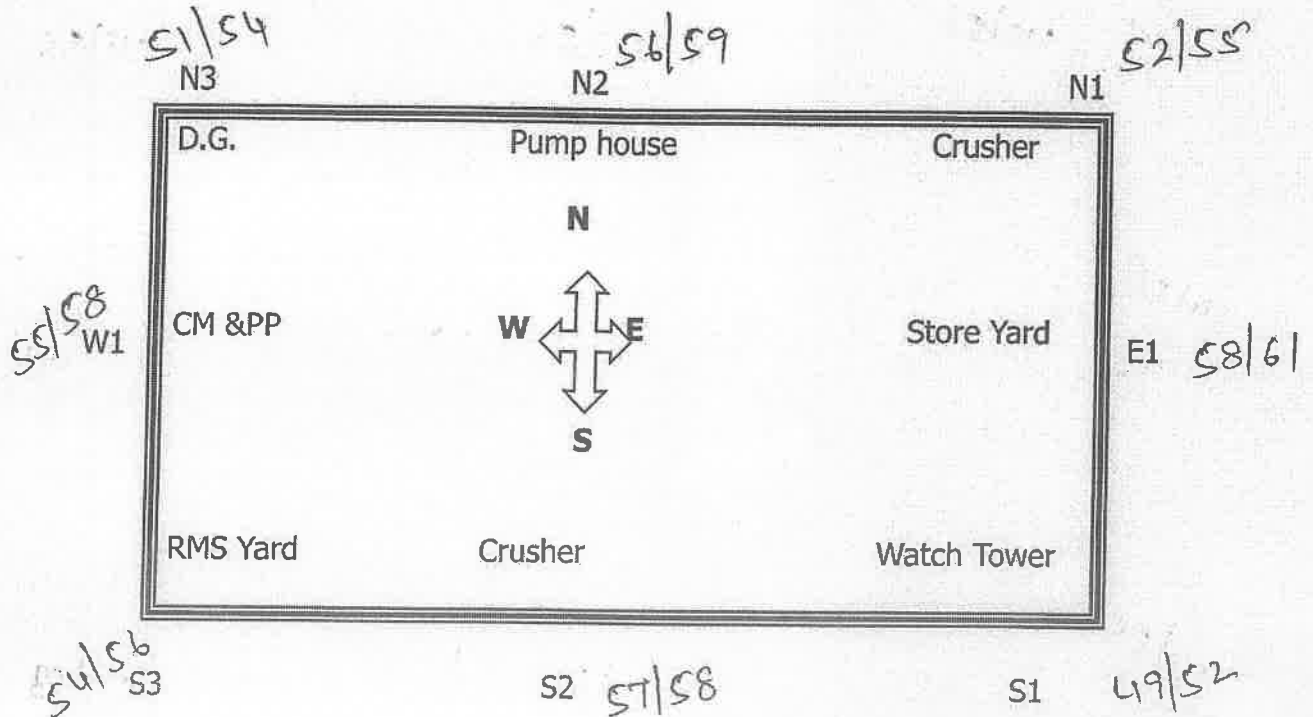


Ambient Noise Level Measurement Record (in dB (A))

Date: 29/10/2024

Time: 10.25 AM

Day/Night:



CRUSHER	: OPERATING/ NOT OPERATING
RAW MILL	: OPERATING/ NOT OPERATING
KILN	: OPERATING/ NOT OPERATING
CEMENT MILL	: OPERATING/ NOT OPERATING.
PACKING PLANT	: OPERATING/ NOT OPERATING
D. G.	: OPERATING/ NOT OPERATING
COMPRESSOR	: OPERATING/ NOT OPERATING
PET- COKE MILL	: OPERATING/ NOT OPERATING
Ready Mix Mortar	: OPERATING/ NOT OPERATING

REMARKS IF ANY:

MEASURED BY:

(Handwritten signature)

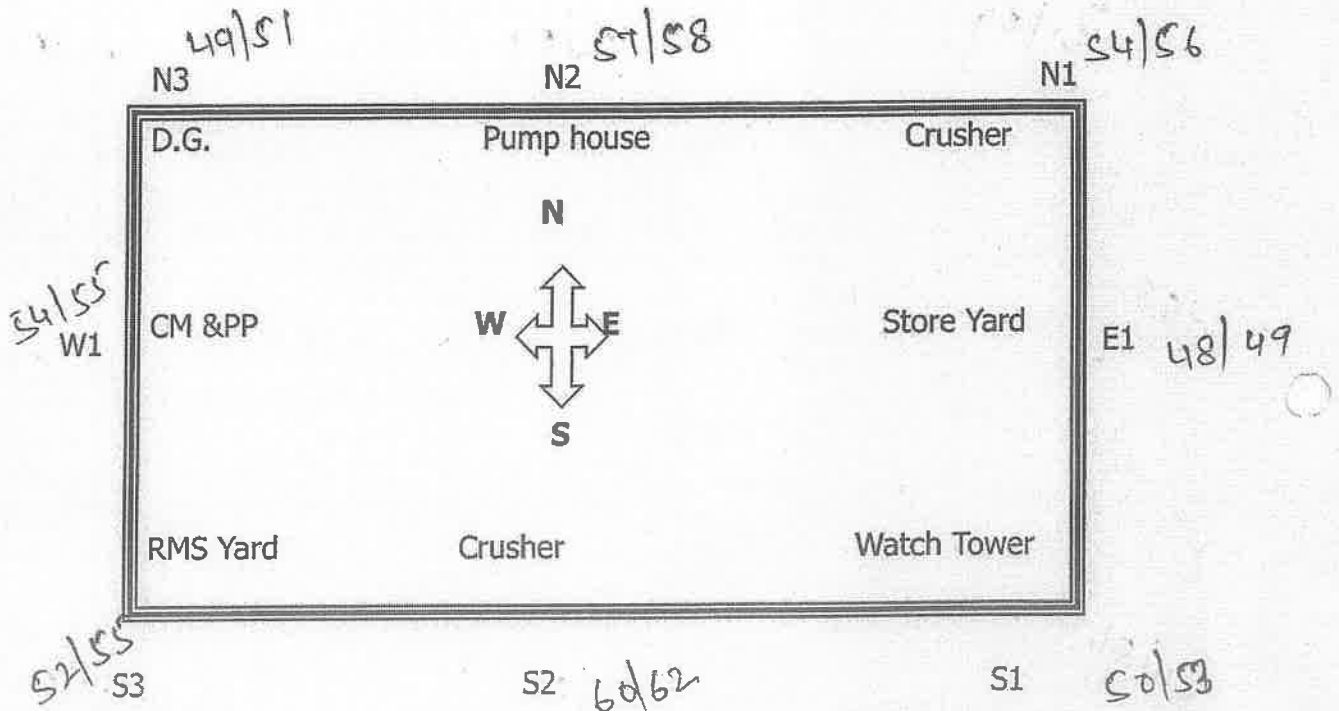


Ambient Noise Level Measurement Record (in dB (A))

Date: 29/10/2024

Time: 9.40 pm

Day/ Night: ☒ Day ☐ Night



CRUSHER	: OPERATING/ NOT OPERATING <input checked="" type="checkbox"/>
RAW MILL	: OPERATING/ NOT OPERATING <input checked="" type="checkbox"/>
KILN	: OPERATING/ NOT OPERATING <input checked="" type="checkbox"/>
CEMENT MILL	: OPERATING/ NOT OPERATING <input checked="" type="checkbox"/>
PACKING PLANT	: OPERATING/ NOT OPERATING <input checked="" type="checkbox"/>
D. G.	: OPERATING/ NOT OPERATING <input checked="" type="checkbox"/>
COMPRESSOR	: OPERATING/ NOT OPERATING <input checked="" type="checkbox"/>
PET- COKE MILL	: OPERATING/ NOT OPERATING <input checked="" type="checkbox"/>
Ready Mix Mortar	: OPERATING/ NOT OPERATING <input checked="" type="checkbox"/>

REMARKS IF ANY:

MEASURED BY:

[Signature]



SIGNATURE:

JK Cement Works,Gotan FY 2024-25

Plant/Site	Employee Name	AUDIOMETRY	Blood Group	DISTANT VISION LEFT	DISTANT VISION RIGHT	ECG REPORT	HEIGHT	NEAR VISION LEFT	NEAR VISION RIGHT	SPIROMETRY	WEIGHT
Gotan-Grey	Aditya Kumar	NORMAL	AB-VE	6/6	6/6	NORMAL	174	N-6	N-6	MILD REST	79.8
Gotan-Grey	Anand Kumar Soni	NORMAL	O+VE	6/6 C GLS	6/6 C GLS	NORMAL	175	N-6 C GLS	N-6 C GLS	NORMAL	79
Gotan-Grey	Andhan Kumar	NORMAL	O+VE	6/6	6/6	NORMAL	176	N-6	N-6	NORMAL	85
Gotan-Grey	Anil Kumar	NORMAL	B+VE	6/6GLS	6/6 GLS	NORMAL	167	N-6 GLS	N-6 GLS	NORMAL	81
Gotan-Grey	Anirudh Bhan Ojha	NORMAL	O -VE	6/6	6/6	NORMAL	178	N-6	N-6	NORMAL	95.5
Gotan-Grey	ANKIT AGARWAL	NORMAL	B+VE	6/6	6/6	NORMAL	171	N-6	N-6	NORMAL	63.6
Gotan-Grey	Ashok Kumar Chhparwal	NORMAL	O+VE	6/6	6/6	NORMAL	170	N-6	N-6	NORMAL	93.20
Gotan-Grey	Bal Mukund Sen	NORMAL	O +VE	6/6	6/6	NORMAL	167	N-6	N-6	NORMAL	89.6
Gotan-Grey	Bhanwar Puri	NORMAL	B+VE	6/6	6/6	NORMAL	172	N-6 GLS	N-6 GLS	MILD REST	61.6
Gotan-Grey	Bhawani Lal Dhakar	NORMAL	AB+VE	6/6	6/6	NORMAL	172	N-6	N-6	MILD REST	68.5
Gotan-Grey	Dashrath Singh	NORMAL	B+VE	6/6 C GLASS	6/6 C GLASS	NORMAL	160	N-6 C GLASS	N-6 C GLASS	NORMAL	71
Gotan-Grey	Deepak Deora	NORMAL	A+VE	6/6	6/6	NORMAL	175	N-6	N-6	NORMAL	80
Gotan-Grey	Dharamraj Chouhan	NORMAL	O-VE	6/6 GLS	6/6 GLS	NORMAL	167	N-8 GLS	N-8 GLS	NORMAL	90.6
Gotan-Grey	Dharmesh Sharma	NORMAL	B+VE	6/6	6/6	NORMAL	164	N-6	N-6	NORMAL	63
Gotan-Grey	Dileep Singh	NORMAL	AB+VE	6/6	6/6	NORMAL	167	N-8 GLS	N-8 GLS	NORMAL	79
Gotan-Grey	Dilip Bharadiya	NORMAL	B+VE	6/6	6/6	NORMAL	173	N-6	N-6	NORMAL	94
Gotan-Grey	Fef Singh Rathore	NORMAL	A+VE	6/6 C GLASS	6/6 C GLASS	NORMAL	181	N-8 C GLASS	N-8 C GLASS	MILD REST	69
Gotan-Grey	Ganpat Singh	NORMAL	A+VE	6/9 CGLASS	6/9 CGLASS	NORMAL	167	N-6 CGLASS	N-6 CGLASS	NORMAL	70
Gotan-Grey	Gopal Jangid	ML BE	B+VE	6/6 CGLASS	6/6 CGLASS	NORMAL	165	N-6 CGLASS	N-6 CGLASS	NORMAL	73
Gotan-Grey	Gopal Lal Sharma	NORMAL	O+VE	6/6 GLS	6/6 GLS	NORMAL	171	N-6 GLS	N-6 GLS	NORMAL	66
Gotan-Grey	Govind Sharma	BL LE	O+VE	6/9 CGLASS	6/9 C GLASS	NORMAL	173	N-6 CGLASS	N-6 CGLASS	NORMAL	84
Gotan-Grey	Hari Singh	BL BE	O+VE	6/6	6/6	NORMAL	172	N-6	N-6	MILD REST	71
Gotan-Grey	Indar Singh Rao	NORMAL	O+VE	6/9 CGLASS	6/9 CGLASS	NORMAL	176	N-6 CGLASS	N-6 CGLASS	NORMAL	69.5
Gotan-Grey	Jagdish Sharma	NORMAL	B+VE	6/9 CGLASS	6/9 CGLASS	NORMAL	169	N-6 GLS	N-6 GLS	MILD REST	62
Gotan-Grey	Kailash Chandra Sikhwal	ML BE	B+VE	6/6	6/6	NORMAL	174	N-6	N-6	NORMAL	90
Gotan-Grey	Kalu Ram Sharma	ML BE	O+VE	6/9 CGLASS	6/6	NORMAL	177	N-8 GLS	N-8 GLS	NORMAL	70
Gotan-Grey	KAMLESH CHOUDHARY	NORMAL	A-VE	6/6	6/6	NORMAL	171	N-6	N-6	NORMAL	85.6
Gotan-Grey	Kedar Mal Kurmi	NORMAL	O+VE	6/6	6/6	NORMAL	181	N-6	N-6	NORMAL	100
Gotan-Grey	Kishore Singh	NORMAL	O+VE	6/6	6/6	NORMAL	170	N-6	N-6	NORMAL	64
Gotan-Grey	Kistur Bhukar	NORMAL	O+VE	6/6	6/6	NORMAL	168	N-6	N-6	NORMAL	68
Gotan-Grey	Mahavir Gusai	NORMAL	O+VE	6/6 C GLS	6/9 C GLS	NORMAL	159	N-6 C GLS	N-6 C GLS	NORMAL	54
Gotan-Grey	Manish Jain	ML BE	B+VE	6/6	6/6	NORMAL	169	N-6	N-6	NORMAL	72
Gotan-Grey	Mohit Tiwari	NORMAL	B-VE	6/6 C GLS	6/6 C GLS	NORMAL	179	N-6	N-6	NORMAL	80
Gotan-Grey	Naresh Kumar Rathi	NORMAL	O-VE	6/6	6/6	NORMAL	181	N-6	N-6	MILD REST	86
Gotan-Grey	Navin Kumar	NORMAL	O+VE	6/6 CGLASS	6/6 CGLASS	NORMAL	165	N-6 CGLASS	N-6 CGLASS	MILD REST	58
Gotan-Grey	Niranjan Jain	NORMAL	AB+VE	6/6 GLS	6/6 GLS	NORMAL	161	N-6	N-6	NORMAL	56
Gotan-Grey	Pankaj Goutam	NORMAL	B+VE	6/6 GLS	6/6 GLS	NORMAL	179	N-6	N-6	NORMAL	87.3
Gotan-Grey	PARMESHVAR LAL	NORMAL	O +VE	6/6	6/6	NORMAL	176	N-6	N-6	NORMAL	75
Gotan-Grey	Pradeep Mundel	NORMAL	O+VE	6/6	6/6	NORMAL	183	N-6	N-6	NORMAL	74.9
Gotan-Grey	Pradhan Singh Chouhan	ML BE	O+VE	6/6 CGLASS	6/6 CGLASS	NORMAL	170	N-6 CGLASS	N-6 CGLASS	NORMAL	91
Gotan-Grey	Prahlad Ram Godara	NORMAL	O+VE	6/9	6/9	NORMAL	172	N-6	N-6	NORMAL	63
Gotan-Grey	Prakash Kumar Saini	NORMAL	AB+VE	6/6 C GLS	6/6 C GLS	NORMAL	171	N -6 C GLS	N -6 C GLS	NORMAL	72
Gotan-Grey	Rajeev Rai	NORMAL	B+VE	6/6	6/6	NORMAL	157	N-6	N-6	NORMAL	57
Gotan-Grey	Rajesh Kumar Rathore	NORMAL	O+VE	6/6GLS	6/6 GLS	NORMAL	163	N-6 GLS	N-6 GLS	NORMAL	79
Gotan-Grey	RAKESH KUMAR ARYA	NORMAL	B+VE	6/6 GLS	6/6 GLS	NORMAL	165	N-6	N-6	NORMAL	71
Gotan-Grey	Ram Avtar	ML BE	O +VE	6/6	6/6	NORMAL	172	N-6	N-6	NORMAL	85
Gotan-Grey	Ram Jeevan Choudhary	NORMAL	A+VE	6/6 GLS	6/6 GLS	NORMAL	172	N-6 GLS	N-6 GLS	MILD REST	73.8
Gotan-Grey	Ram Lal Prajapat	NORMAL	O+VE	6/6 C GLASS	6/6 C GLASS	NORMAL	162	N-6 C GLASS	N-6 C GLASS	MILD REST	89
Gotan-Grey	Ram Lal Prajapat	ML LE	B+VE	6/9 CGLASS	6/9 CGLASS	NORMAL	170	N-8 GLS	N-8 GLS	NORMAL	82
Gotan-Grey	Ram Lal Prajapat	ML BE	B+VE	6/6	6/6	NORMAL	177	N.6 CGLASS	N.6 CGLASS	MILD REST	102
Gotan-Grey	Ram Raj Beda	NORMAL	B+VE	6/6	6/6	NORMAL	170	N-6	N-6	NORMAL	71
Gotan-Grey	Ramesh Chand Sharma	NORMAL	O+VE	6/6 GLS	6/6 GLS	NORMAL	152	N-6 GLS	N-6 GLS	MILD REST	45.5
Gotan-Grey	Rameshwar Lal Sain	NORMAL	O-VE	6/9	6/9	NORMAL	159	N-6 C GLASS	N-6 C GLASS	NORMAL	61
Gotan-Grey	Ravi Khandelwal	NORMAL	O+VE	6/6	6/6	NORMAL	163	N-6	N-6	MILD REST	68
Gotan-Grey	Rekha Ram Prajapat	NORMAL	O+VE	6//6 C GLASS	6/6 C GLASS	NORMAL	168	N-6 C GLASS	N-6 C GLASS	NORMAL	102
Gotan-Grey	ROHIT SINGH RATHORE	NORMAL	A+VE	6/6 CGLASS	6/6CGLASS	NORMAL	171	N-6 CGLASS	N-6 CGLASS	NORMAL	64
Gotan-Grey	Sahdev Singh Rathore	NORMAL	O+VE	6/6 C GLS	6/6 C GLS	NORMAL	176	N-6 C GLS	N-6 C GLS	NORMAL	89
Gotan-Grey	SANJAY KUMAR DUBE	NORMAL	A+VE	6/6	6/6	NORMAL	176	N-6	N-6	NORMAL	90

Gotan-Grey	Sanjay Kumar Sharma	NORMAL	A+VE	6/6	6/6	NORMAL	176	N-6	N-6	NORMAL	74
Gotan-Grey	Sanjay Muwal	NORMAL	AB+VE	6/6 C GLASS	6/6 C GLASS	NORMAL	180	N-6	N-6	NORMAL	78
Gotan-Grey	Sanjeev Mundel	NORMAL	A+VE	6/6	6/6	NORMAL	175	N-6	N-6	NORMAL	74.8
Gotan-Grey	SHAITAN SINGH RAJPUT	NORMAL	A +VE	6/6	6/6	NORMAL	172	N-6	N-6	NORMAL	84
Gotan-Grey	SHUBHAM ARORA	NORMAL	O+VE	6/6	6/6	NORMAL	171	N-6	N-6	NORMAL	90
Gotan-Grey	Shubham Srivastava	NORMAL	B+VE	6/6 C GLS	6/6 C GLS	NORMAL	176	N-6 C GLS	N-6 C GLS	NORMAL	99.7
Gotan-Grey	SRAWAN KUMAR BENIWAL	NORMAL	O+ VE	6/6	6/6	NORMAL	168	N-6	N-6	NORMAL	61
Gotan-Grey	SUDHIR KUMAR LIMBA	NORMAL	B+VE	6/6 CGLASS	6/6 CGLASS	NORMAL	164	N-6 CGLASS	N-6 CGLASS	NORMAL	63.7
Gotan-Grey	SURENDER SINGH SHAKTAWAT	NORMAL	A -VE	6/6	6/6	NORMAL	181	N-6	N-6	NORMAL	76
Gotan-Grey	Tarun Kumar Chippa	NORMAL	A+VE	6/6	6/6	NORMAL	177	N-6	N-6	MILD REST	77
Gotan-Grey	Teja Ram Devasi	NORMAL	A-VE	6/6	6/6	NORMAL	166	N-6 GLS	N-6 GLS	NORMAL	75
Gotan-Grey	UMA SHANKAR MEHTA	NORMAL	B+VE	6/9 C GLASS	6/9 C GLASS	NORMAL	164	N-6 C GLASS	N-6 C GLASS	NORMAL	69
Gotan-Grey	Vikas Paliwal	NORMAL	B+VE	6/6	6/6	NORMAL	1176	N-6	N-6	NORMAL	84.5